

CHRISTIE'S
INTERNATIONAL REAL ESTATE

———— COSTA DEL SOL ————

Floor plans Ref 2668

M A R B E L L A

VILLA 9

PLOT 1.101,38 m²

BUILT AREA

Living Area 478,24 m²

Terrace Area 188,61 m²

TOTAL BUILT AREA 666,84 m²

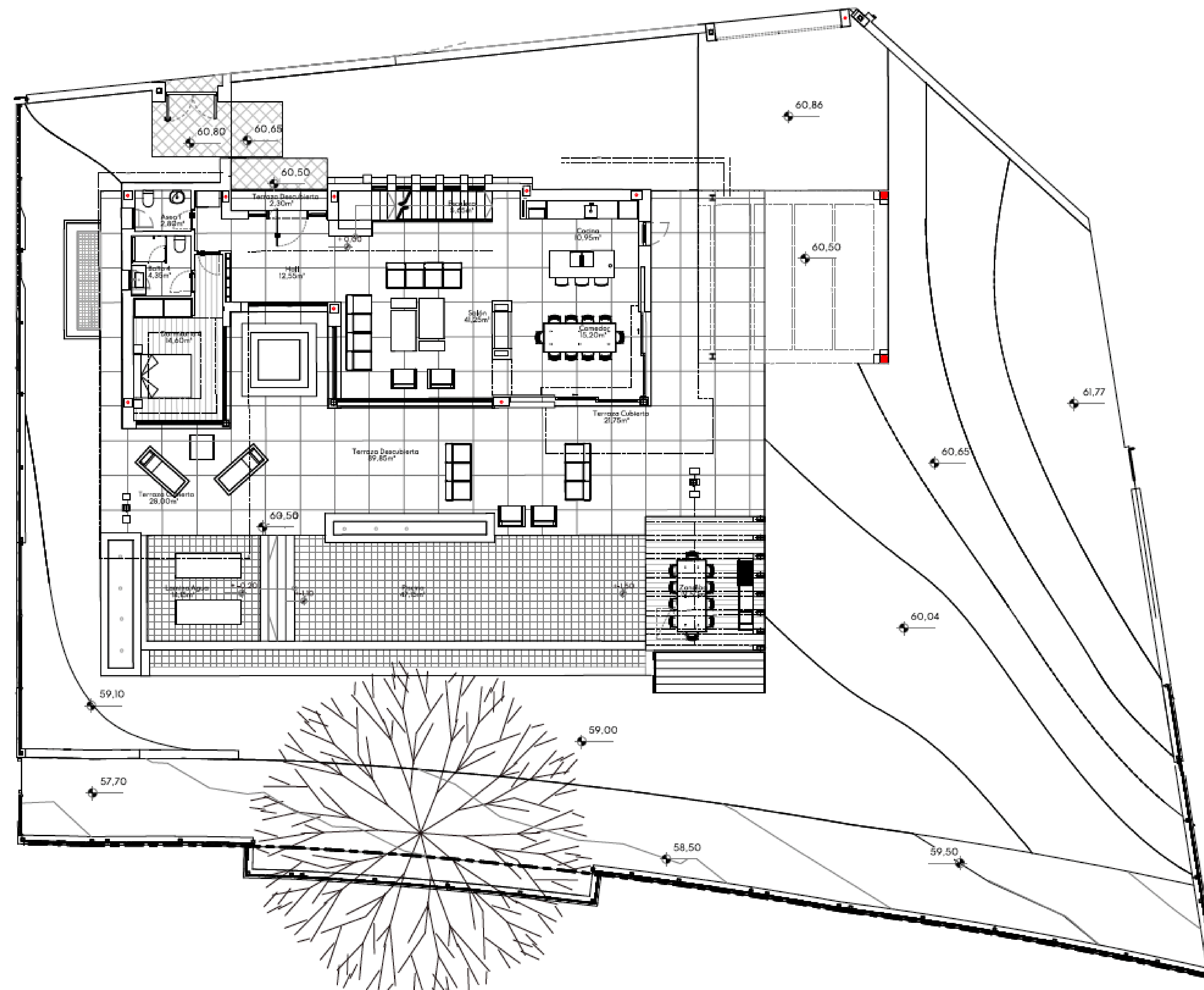
ACCORDING TO DECRETO 218/2005

Useful Area 407,55 m²

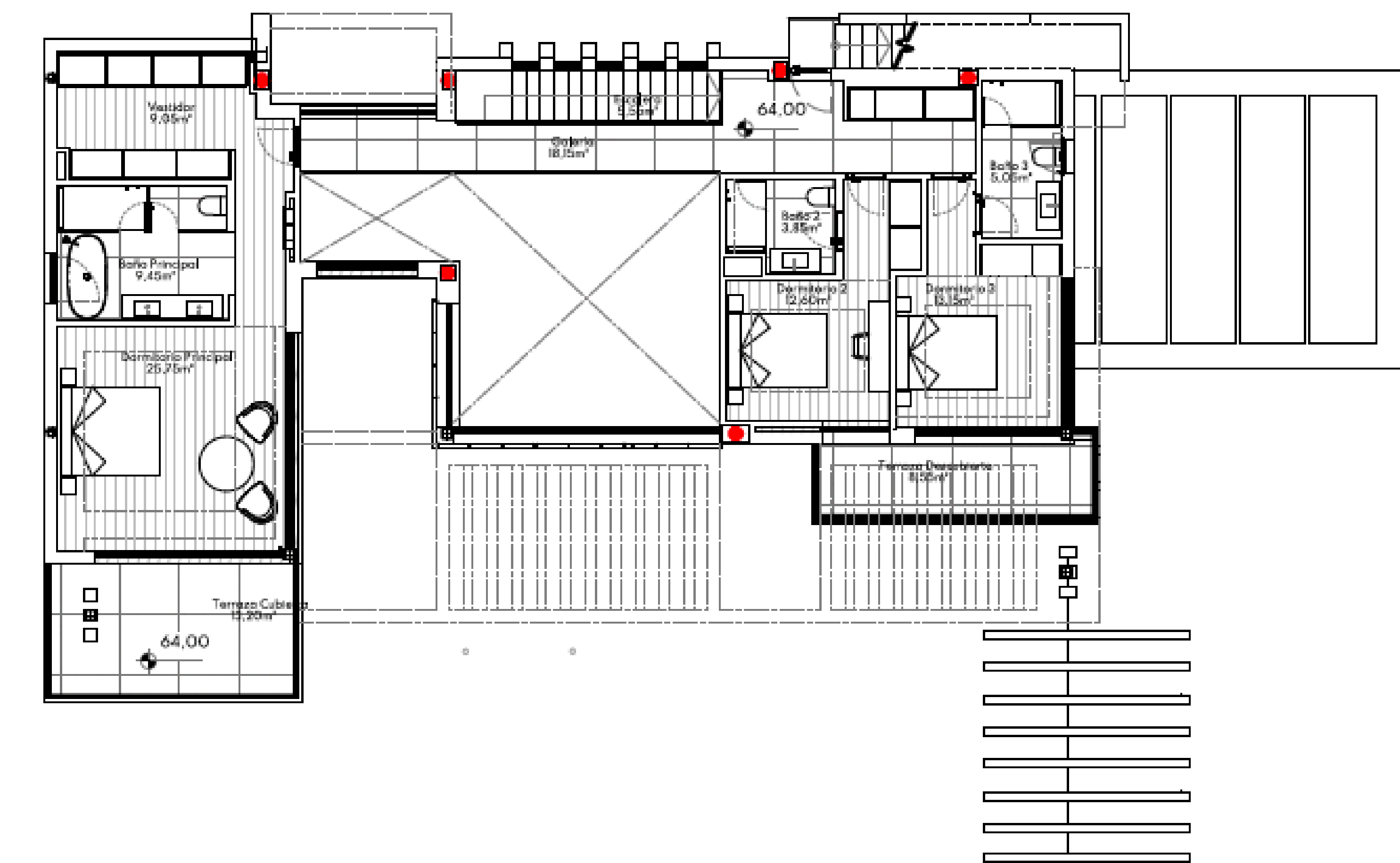
Built Area 515,29 m²



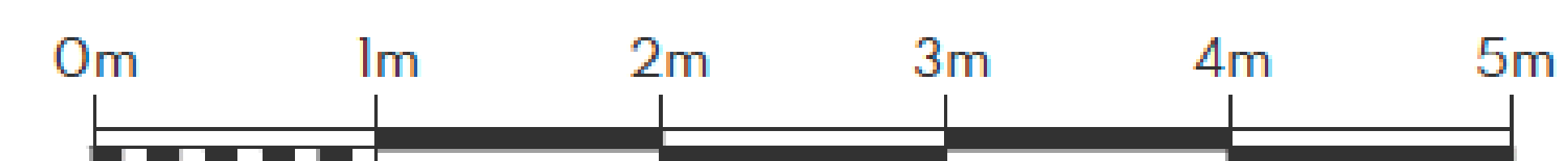
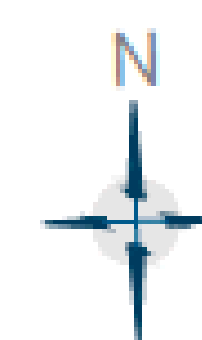
This plan may be modified depending on progress of the development. The furniture shown is purely for decorative purposes. The project manager reserves the right to make the necessary changes for any possible functional, aesthetic and legal reasons, without this negatively affecting the quality of the construction. Illustrative dimensions.



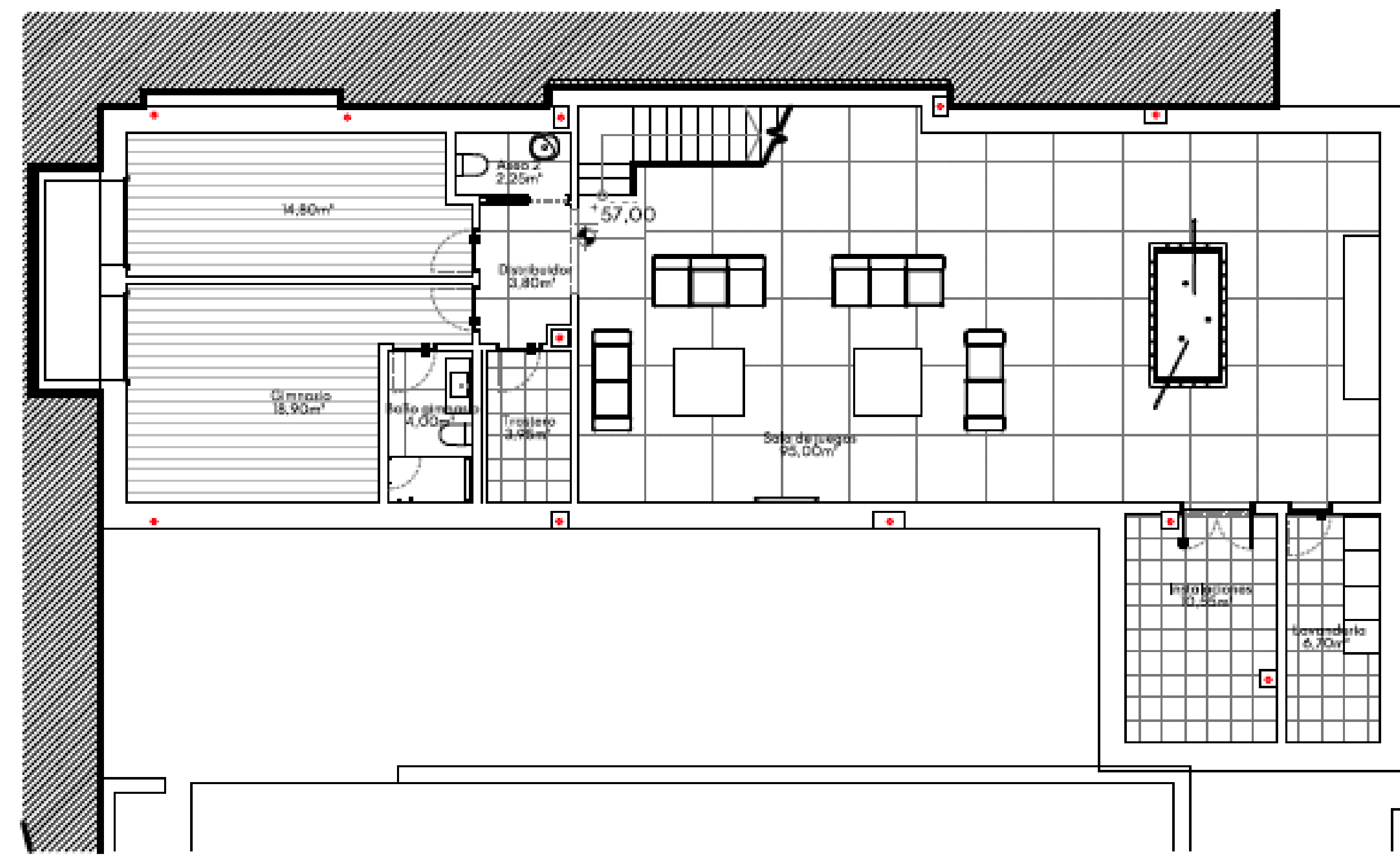
MAIN LEVEL



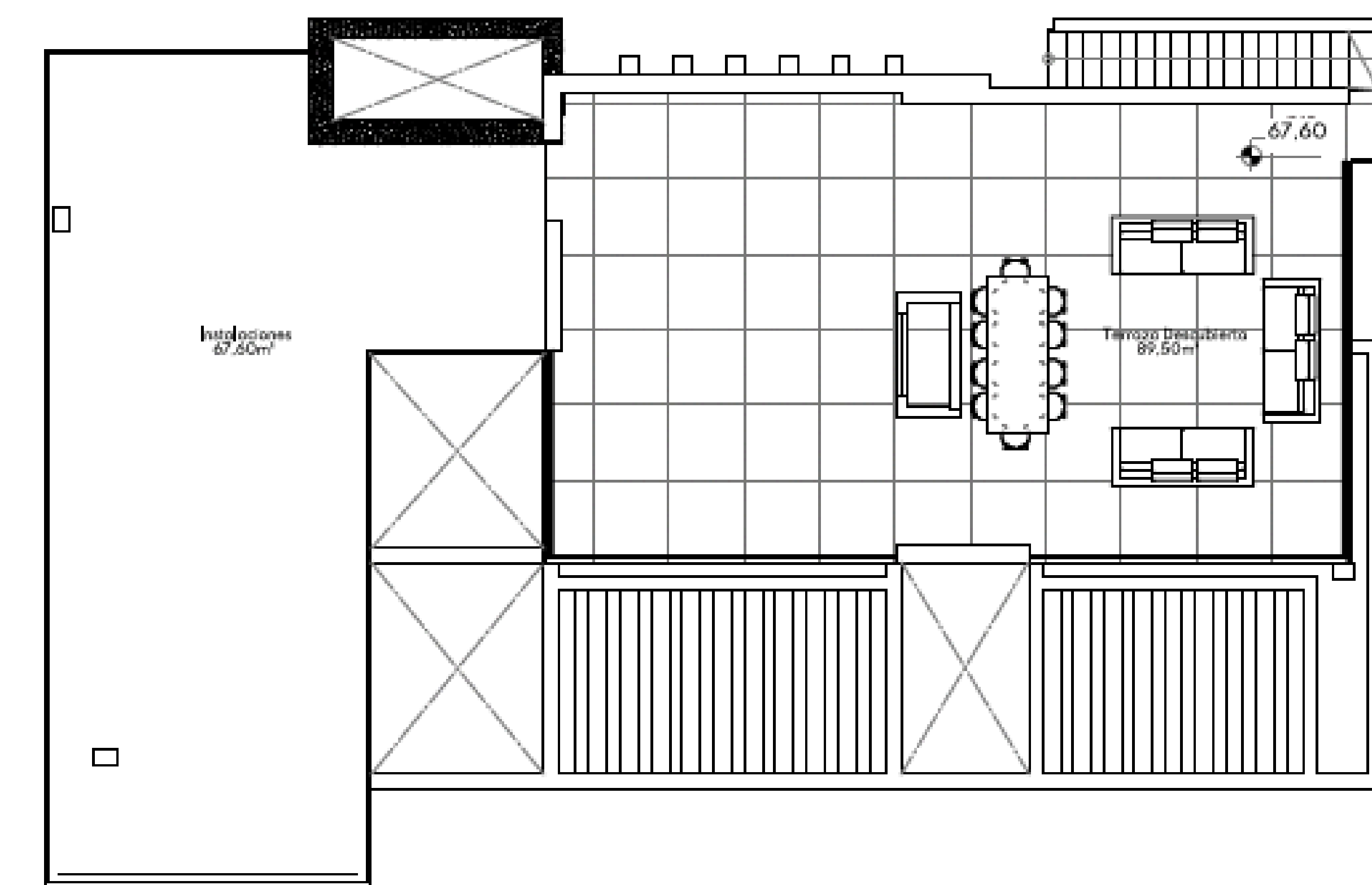
UPPER LEVEL



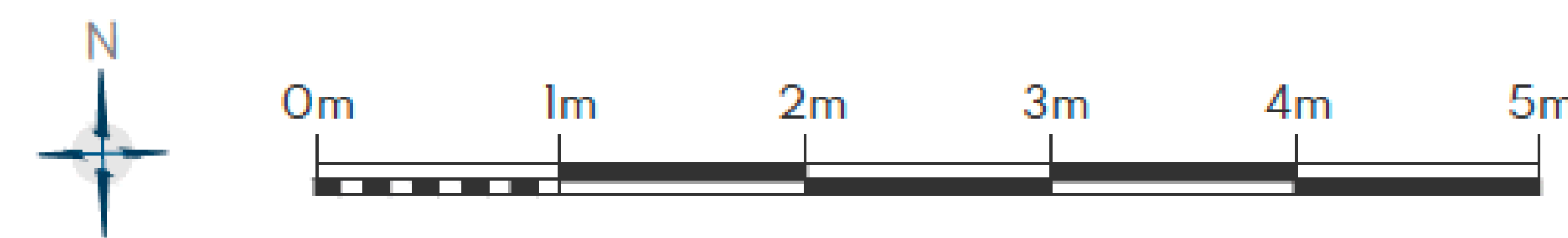
This plan may be modified depending on progress of the development. The furniture shown is purely for decorative purposes. The project manager reserves the right to make the necessary changes for any possible functional, aesthetic and legal reasons, without this negatively affecting the quality of the construction. Illustrative dimensions.



LOWER LEVEL



SOLARIUM



This plan may be modified depending on progress of the development. The furniture shown is purely for decorative purposes. The project manager reserves the right to make the necessary changes for any possible functional, aesthetic and legal reasons, without this negatively affecting the quality of the construction. Illustrative dimensions.

CHRISTIE'S
INTERNATIONAL REAL ESTATE
———— COSTA DEL SOL ————

Where *Luxury* lives

Velázquez, 1, 29602 Marbella, España
+34 951 122 313 | marbella@cire-costadelsol.com

Paseo de Reding, 25, 29016 Málaga, España
+34 951 122 312 | malaga@cire-costadelsol.com