

CHRISTIE'S
INTERNATIONAL REAL ESTATE

———— COSTA DEL SOL ————

Floor plans Ref 2682

VILLA 7 SOLARIUM



Plot Surface 1001,40 sqm

Basement 307,53 sqm

Ground Floor 101,54 sqm

Upper Floor 123,07 sqm

Solarium 35,86 sqm

Total Interior 568,00 sqm

Covered Terraces 64,64 sqm

Uncovered Terraces 231,71 sqm

Exterior Parking 38,65 sqm

Swimming Pool 40,77 sqm

Garden Courtyard 9,99 sqm

Total Exterior 385,76 sqm

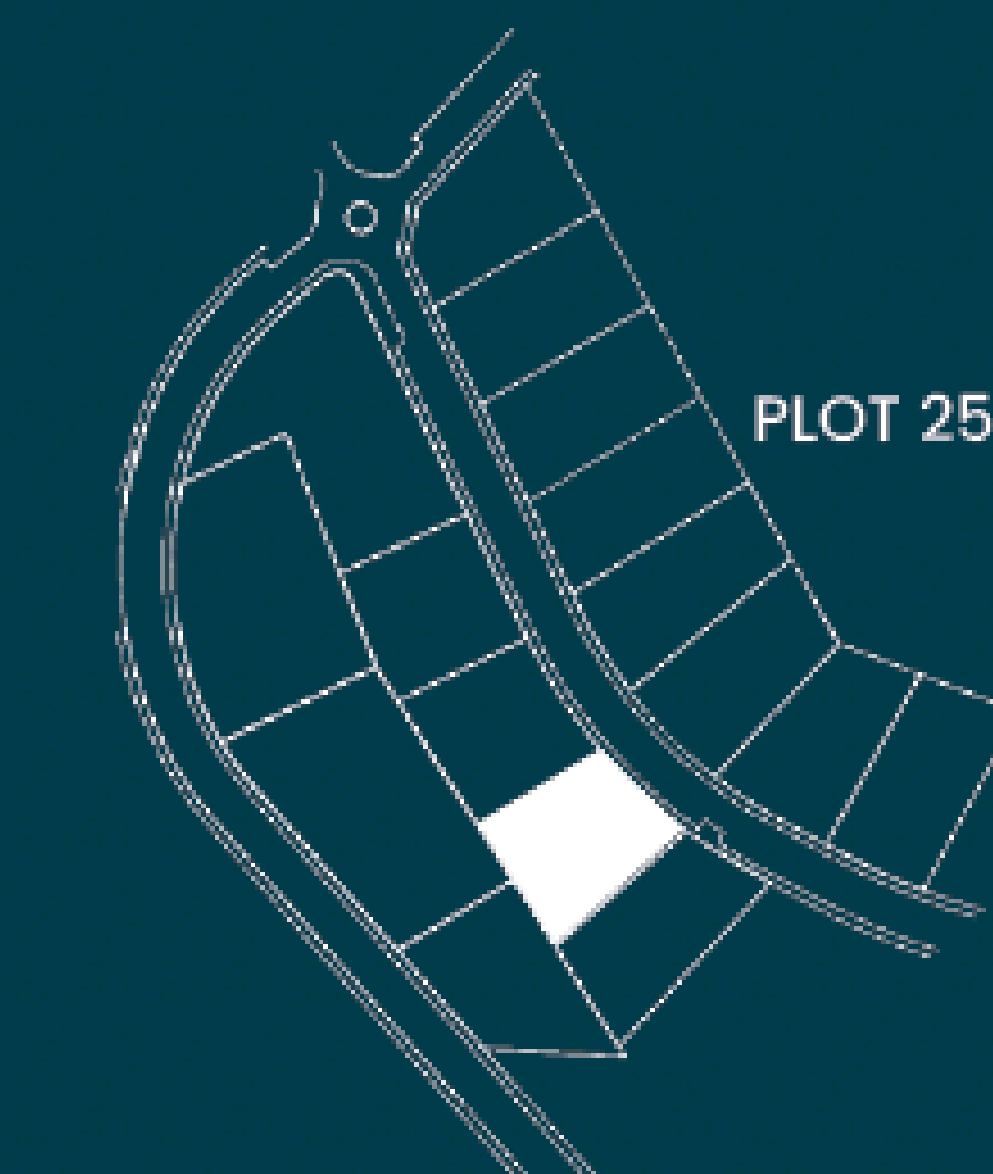
Total Exterior & Interior* 953,76 sqm

Bedrooms 3

Bathrooms 3

Toilets 2

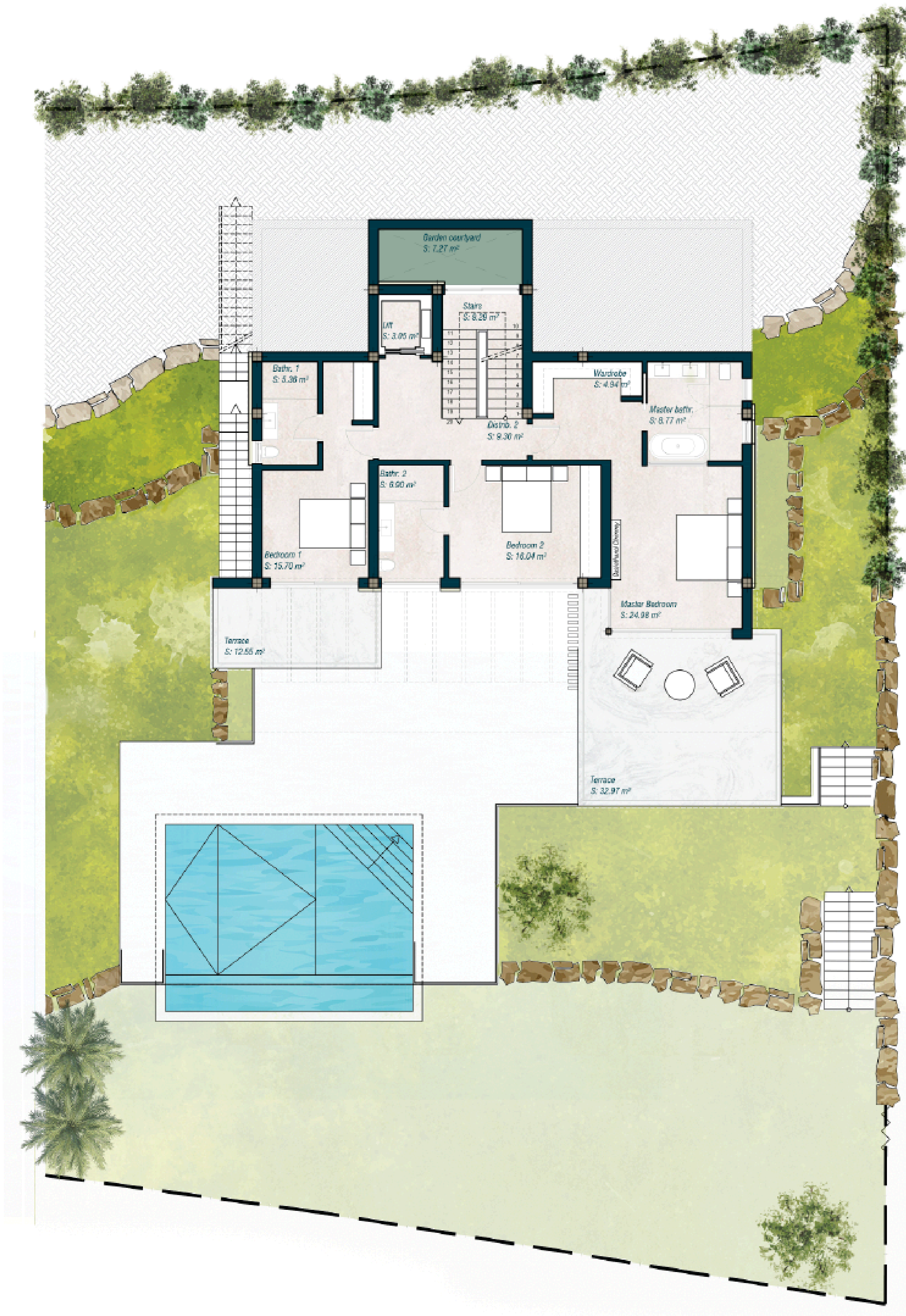
Exterior Parking 2 cars



*All the surfaces detailed in this floor plan correspond to built areas.

The floor plan above is not final as it has been designed in accordance with the Building Execution Project and, consequently, THE VIEW CHASE DEVELOPMENT I S.L. reserves the right to include whatever changes due to technical and/or legal imperatives required by any public Administration or Agency. These changes, in any case, will be in accordance with the progress of the construction work. The accessory elements (for example, including the kitchen) are merely for illustrative purposes. The rotation sense of doors and the distribution of sanitary fittings are not binding. The surface areas shown are approximate and, may be altered for technical and/or legal reasons in the course of the construction work.

VILLA 7
UPPER FLOOR



Plot Surface 1001,40 sqm

Basement 307,53 sqm

Ground Floor 101,54 sqm

Upper Floor 123,07 sqm

Solarium 35,86 sqm

Total Interior 568,00 sqm

Covered Terraces 64,64 sqm

Uncovered Terraces 231,71 sqm

Exterior Parking 38,65 sqm

Swimming Pool 40,77 sqm

Garden Courtyard 9,99 sqm

Total Exterior 385,76 sqm

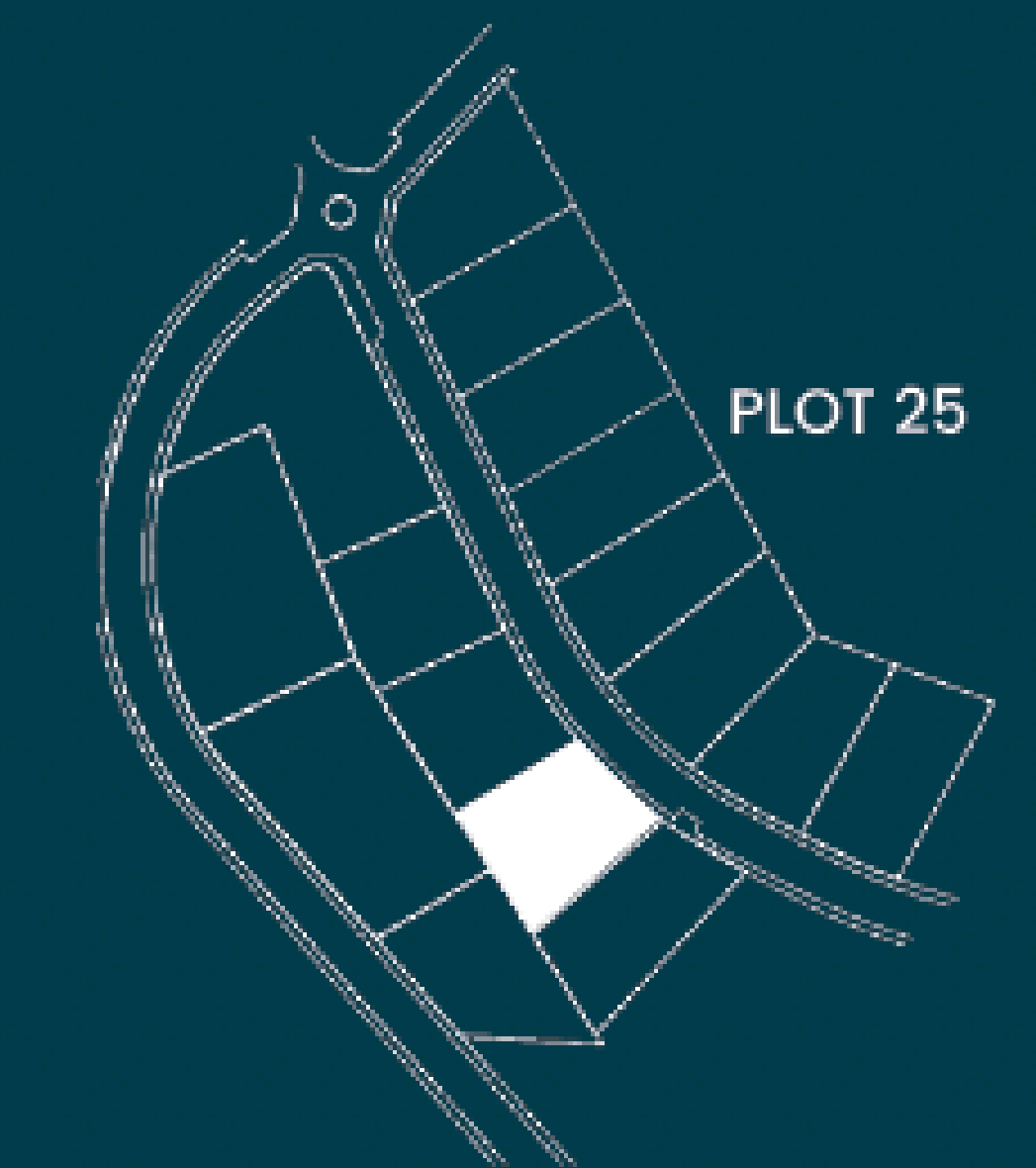
Total Exterior & Interior* 953,76 sqm

Bedrooms 3

Bathrooms 3

Toilets 2

Exterior Parking 2 cars



*All the surfaces detailed in this floor plan correspond to built areas.

The floor plan above is not final as it has been designed in accordance with the Building Execution Project and, consequently, THE VIEW CHASE DEVELOPMENT I S.L. reserves the right to include whatever changes due to technical and/or legal imperatives required by any public Administration or Agency. These changes, in any case, will be in accordance with the progress of the construction work. The accessory elements (for example, including the kitchen) are merely for illustrative purposes. The rotation sense of doors and the distribution of sanitary fittings are not binding. The surface areas shown are approximate and, may be altered for technical and/or legal reasons in the course of the construction work.

VILLA 7 GROUND FLOOR

Plot Surface 1001,40 sqm

Basement 307,53 sqm

Ground Floor 101,54 sqm

Upper Floor 123,07 sqm

Solarium 35,86 sqm

Total Interior 568,00 sqm

Covered Terraces 64,64 sqm

Uncovered Terraces 231,71 sqm

Exterior Parking 38,65 sqm

Swimming Pool 40,77 sqm

Garden Courtyard 9,99 sqm

Total Exterior 385,76 sqm

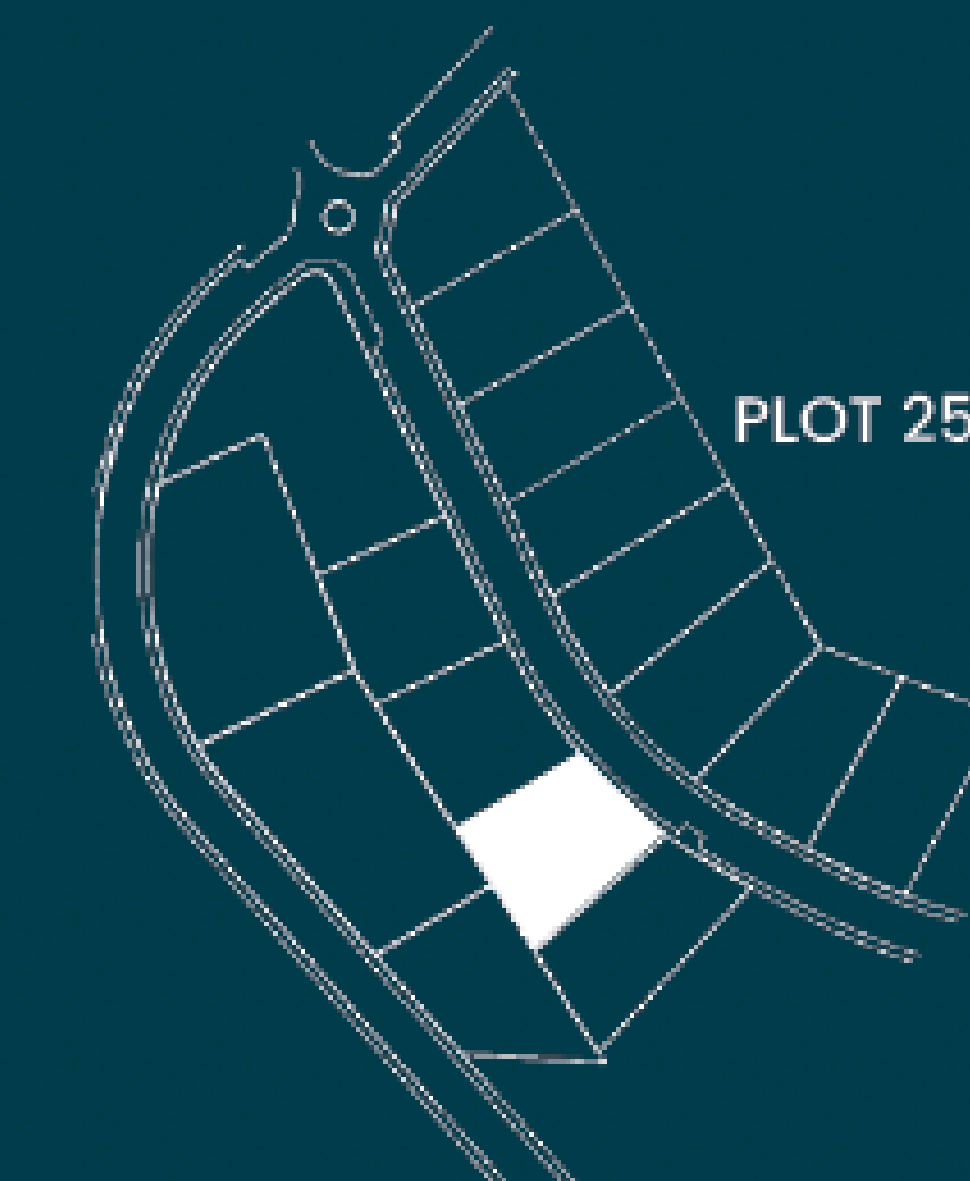
Total Exterior & Interior* 953,76 sqm

Bedrooms 3

Bathrooms 3

Toilets 2

Exterior Parking 2 cars



*All the surfaces detailed in this floor plan correspond to built areas.

The floor plan above is not final as it has been designed in accordance with the Building Execution Project and, consequently, THE VIEW CHASE DEVELOPMENT I.S.L. reserves the right to include whatever changes due to technical and/or legal imperatives required by any public Administration or Agency. These changes, in any case, will be in accordance with the progress of the construction work. The accessory elements (for example, including the kitchen) are merely for illustrative purposes. The rotation sense of doors and the distribution of sanitary fittings are not binding. The surface areas shown are approximate and, may be altered for technical and/or legal reasons in the course of the construction work.



VILLA 7
BASEMENT



Plot Surface 1001,40 sqm

Basement 307,53 sqm

Ground Floor 101,54 sqm

Upper Floor 123,07 sqm

Solarium 35,86 sqm

Total Interior 568,00 sqm

Covered Terraces 64,64 sqm

Uncovered Terraces 231,71 sqm

Exterior Parking 38,65 sqm

Swimming Pool 40,77 sqm

Garden Courtyard 9,99 sqm

Total Exterior 385,76 sqm

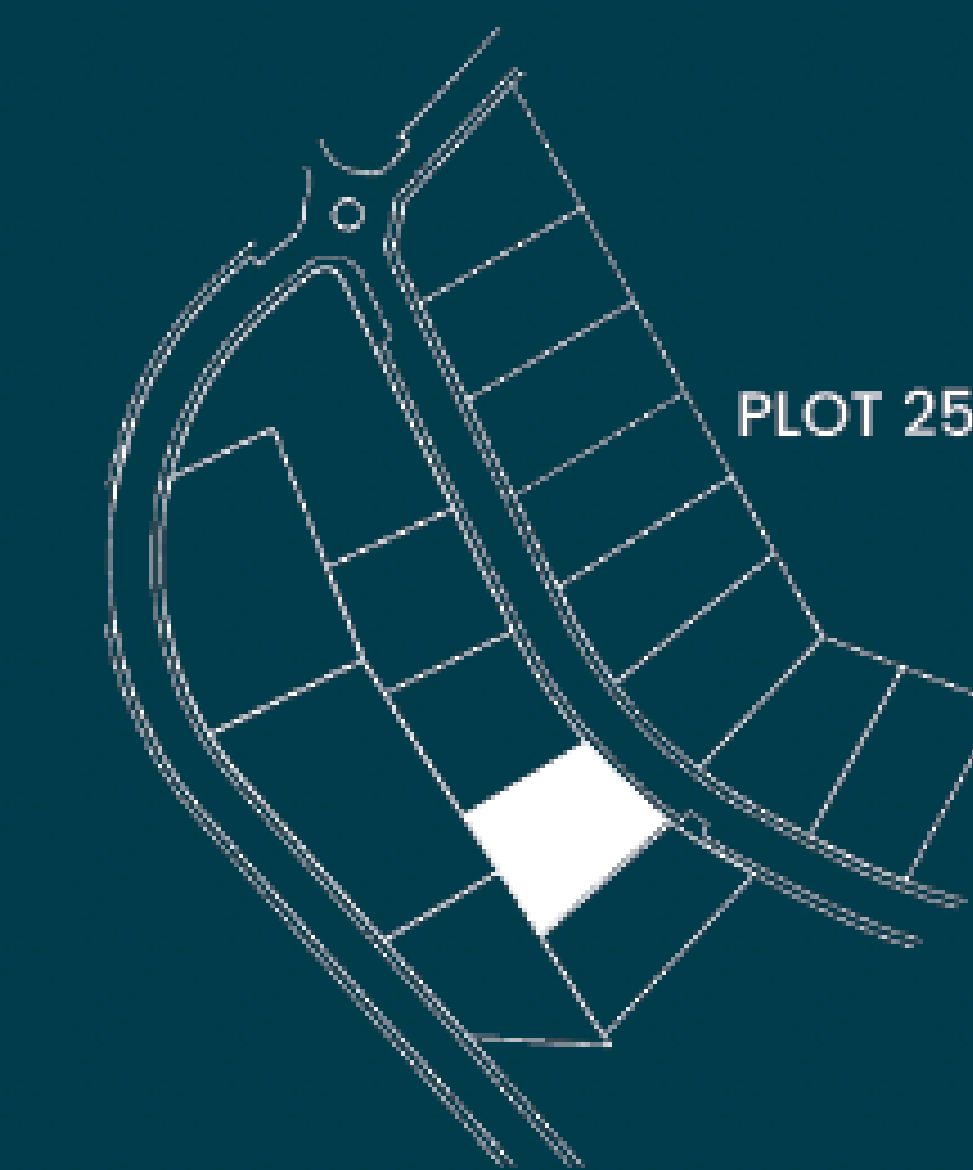
Total Exterior & Interior* 953,76 sqm

Bedrooms 3

Bathrooms 3

Toilets 2

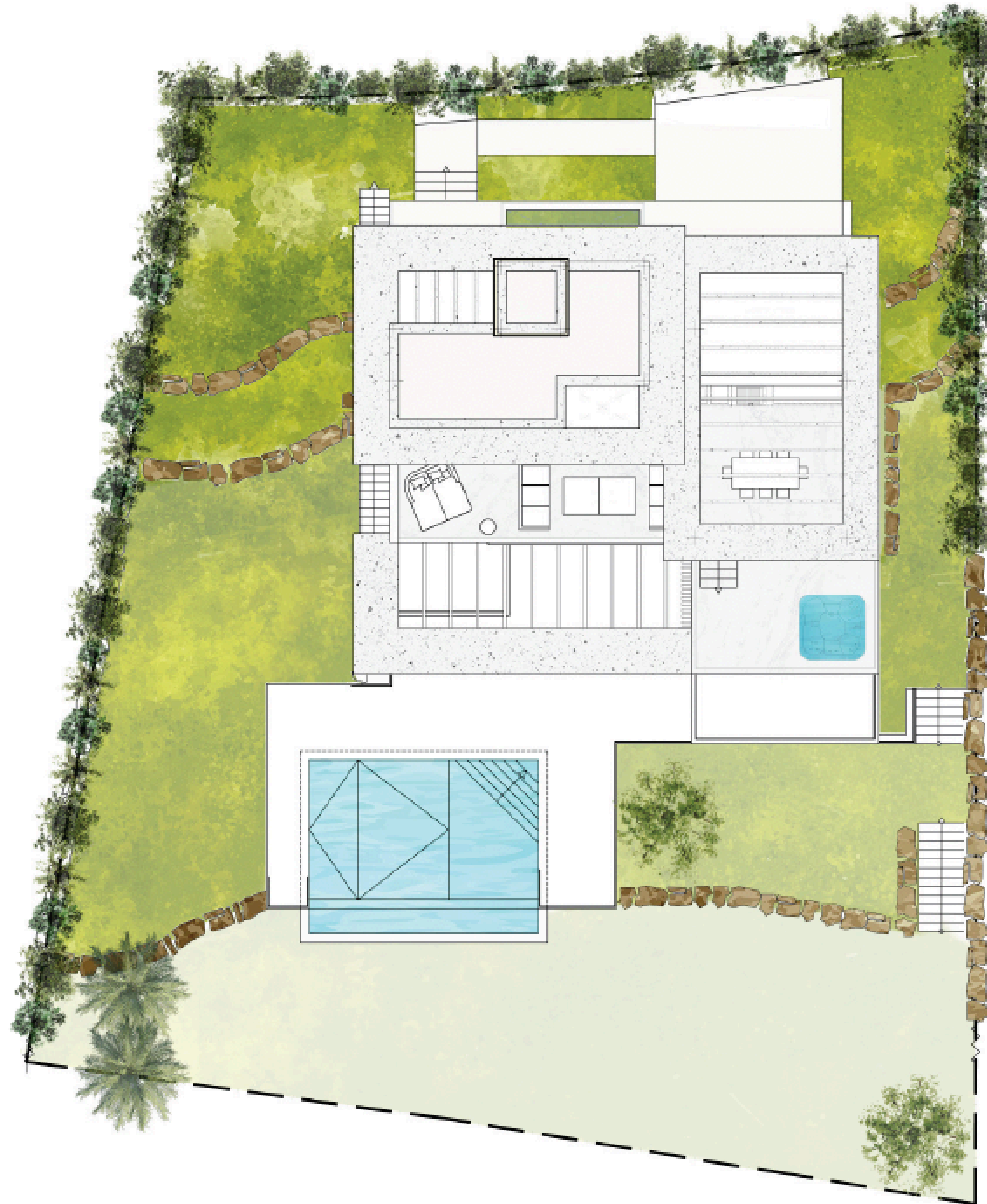
Exterior Parking 2 cars



*All the surfaces detailed in this floor plan correspond to built areas.

The floor plan above is not final as it has been designed in accordance with the Building Execution Project and, consequently, THE VIEW CHASE DEVELOPMENT I S.L. reserves the right to include whatever changes due to technical and/or legal imperatives required by any public Administration or Agency. These changes, in any case, will be in accordance with the progress of the construction work. The accessory elements (for example, including the kitchen) are merely for illustrative purposes. The rotation sense of doors and the distribution of sanitary fittings are not binding. The surface areas shown are approximate and, may be altered for technical and/or legal reasons in the course of the construction work.

VILLA 7 SITE PLAN



Plot Surface 1001,40 sqm

Basement 307,53 sqm

Ground Floor 101,54 sqm

Upper Floor 123,07 sqm

Solarium 35,86 sqm

Total Interior 568,00 sqm

Covered Terraces 64,64 sqm

Uncovered Terraces 231,71 sqm

Exterior Parking 38,85 sqm

Swimming Pool 40,77 sqm

Garden Courtyard 9,99 sqm

Total Exterior 385,76 sqm

Total Exterior & Interior 953,76 sqm

Bedrooms 3

Bathrooms 6

Toilets 3

Exterior Parking 2 cars



The floor plan above is not final as it has been designed in accordance with the Building Execution Project and, consequently, THE VIEW CHASE DEVELOPMENT I S.L. reserves the right to include whatever changes due to technical and/or legal imperatives required by any public Administration or Agency. These changes, in any case, will be in accordance with the progress of the construction work. The accessory elements (for example, including the kitchen) are merely for illustrative purposes. The rotation sense of doors and the distribution of sanitary fittings are not binding. The surface areas shown are approximate and, may be altered for technical and/or legal reasons in the course of the construction work.

CHRISTIE'S
INTERNATIONAL REAL ESTATE
———— COSTA DEL SOL ————

Where *Luxury* lives

Velázquez, 1, 29602 Marbella, España
+34 951 122 313 | marbella@cire-costadelsol.com

Paseo de Reding, 25, 29016 Málaga, España
+34 951 122 312 | malaga@cire-costadelsol.com