

CHRISTIE'S
INTERNATIONAL REAL ESTATE
———— COSTA DEL SOL ————

Floor plans Ref 2706

VILLA 25

PLOT	1.673,54 m ²
------	-------------------------

BUILT AREA

Living Area	727,91 m ²
Terrace Area	223,25 m ²

TOTAL BUILT AREA	951,16 m ²
------------------	-----------------------

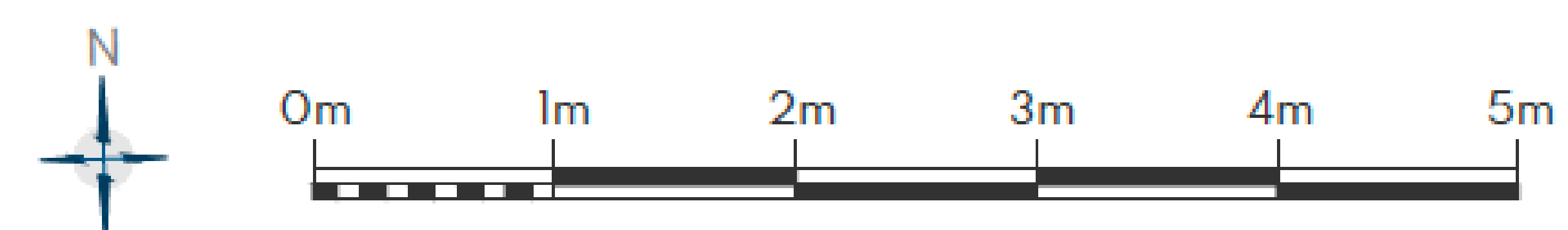
ACCORDING TO DECRETO 218/2005

Useful Area	607,86 m ²
Built Area	783,17 m ²

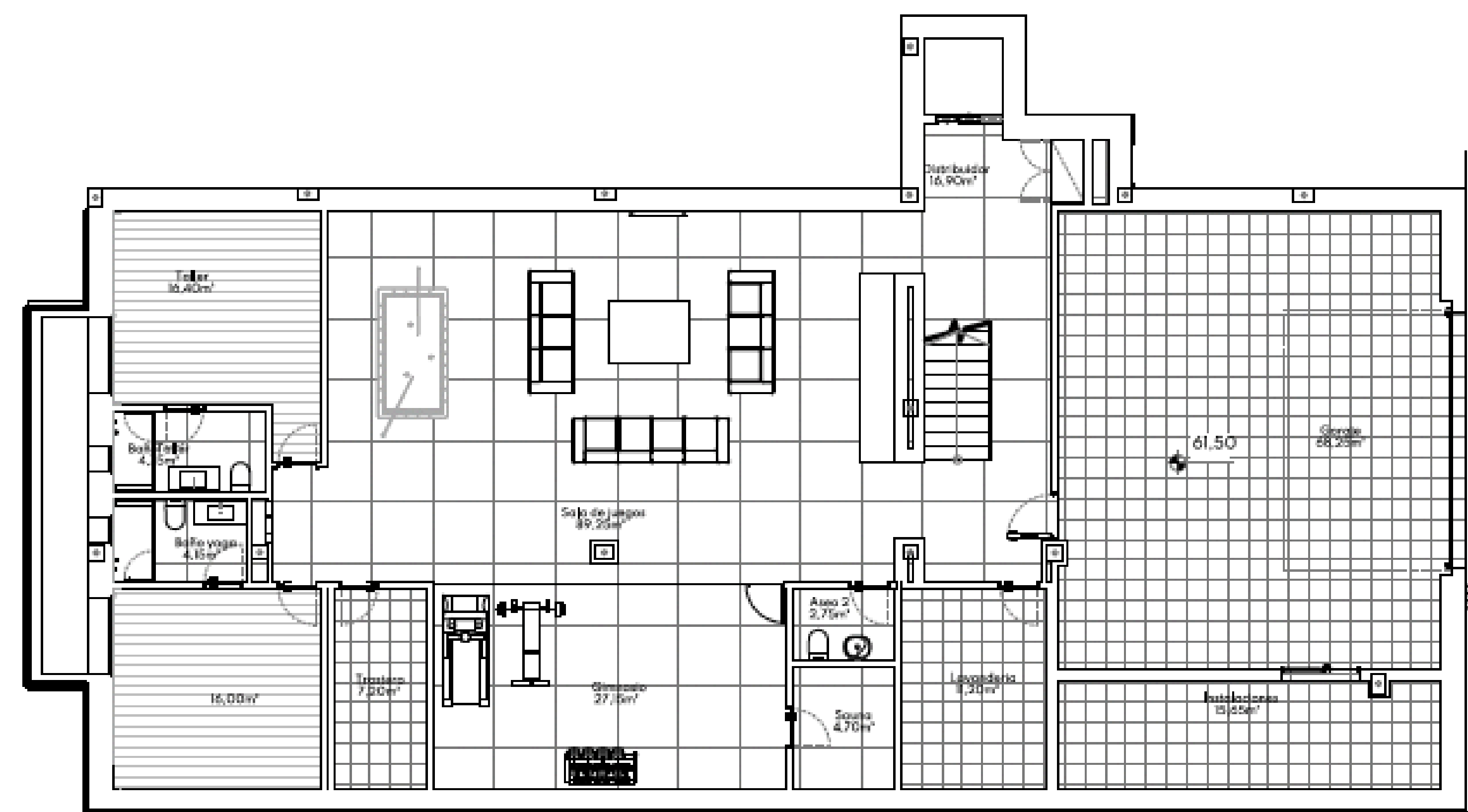


This plan may be modified depending on progress of the development. The furniture shown is purely for decorative purposes. The project manager reserves the right to make the necessary changes for any possible functional, aesthetic and legal reasons, without this negatively affecting the quality of the construction. Illustrative dimensions.

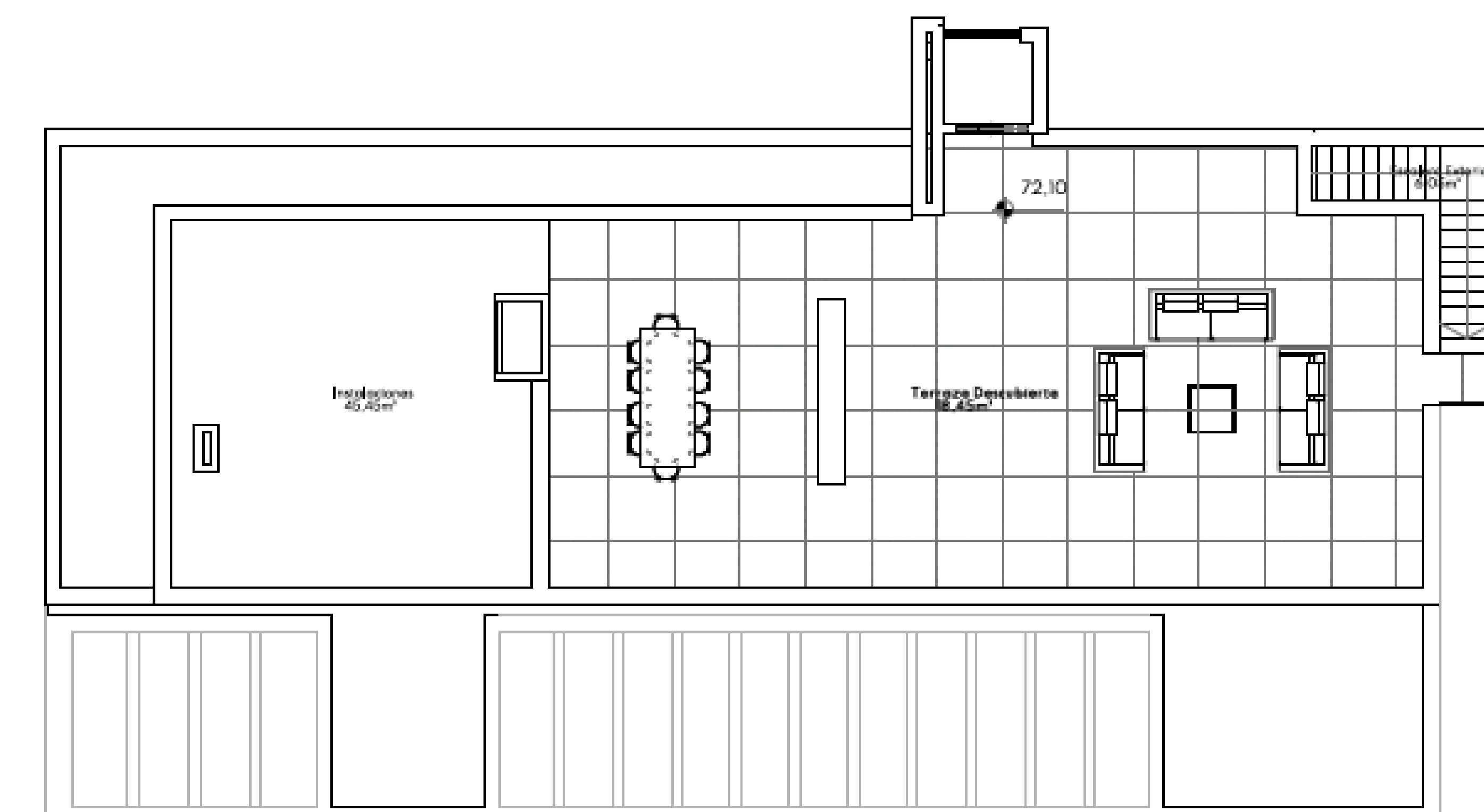
UPPER LEVEL



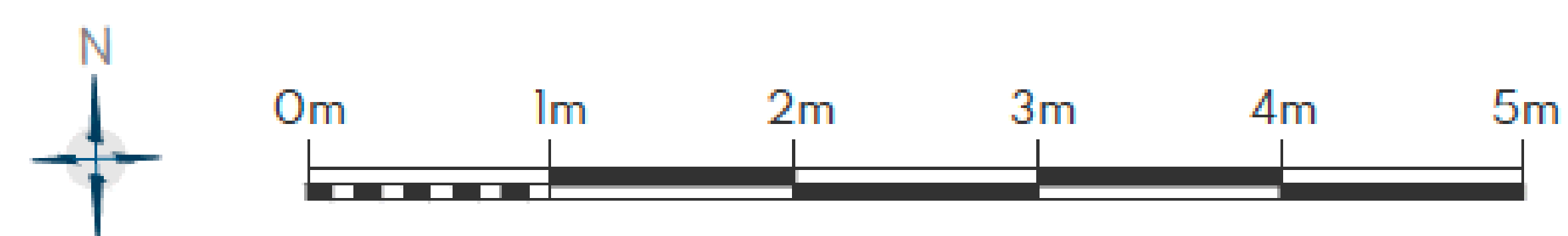
This plan may be modified depending on progress of the development. The furniture shown is purely for decorative purposes. The project manager reserves the right to make the necessary changes for any possible functional, aesthetic and legal reasons, without this negatively affecting the quality of the construction. Illustrative dimensions.



LOWER LEVEL



SOLARIUM



This plan may be modified depending on progress of the development. The furniture shown is purely for decorative purposes. The project manager reserves the right to make the necessary changes for any possible functional, aesthetic and legal reasons, without this negatively affecting the quality of the construction. Illustrative dimensions.

CHRISTIE'S
INTERNATIONAL REAL ESTATE
—— COSTA DEL SOL ——

Where *Luxury* lives

Velázquez, 1, 29602 Marbella, España
+34 951 122 313 | marbella@cire-costadelsol.com

Paseo de Reding, 25, 29016 Málaga, España
+34 951 122 312 | malaga@cire-costadelsol.com