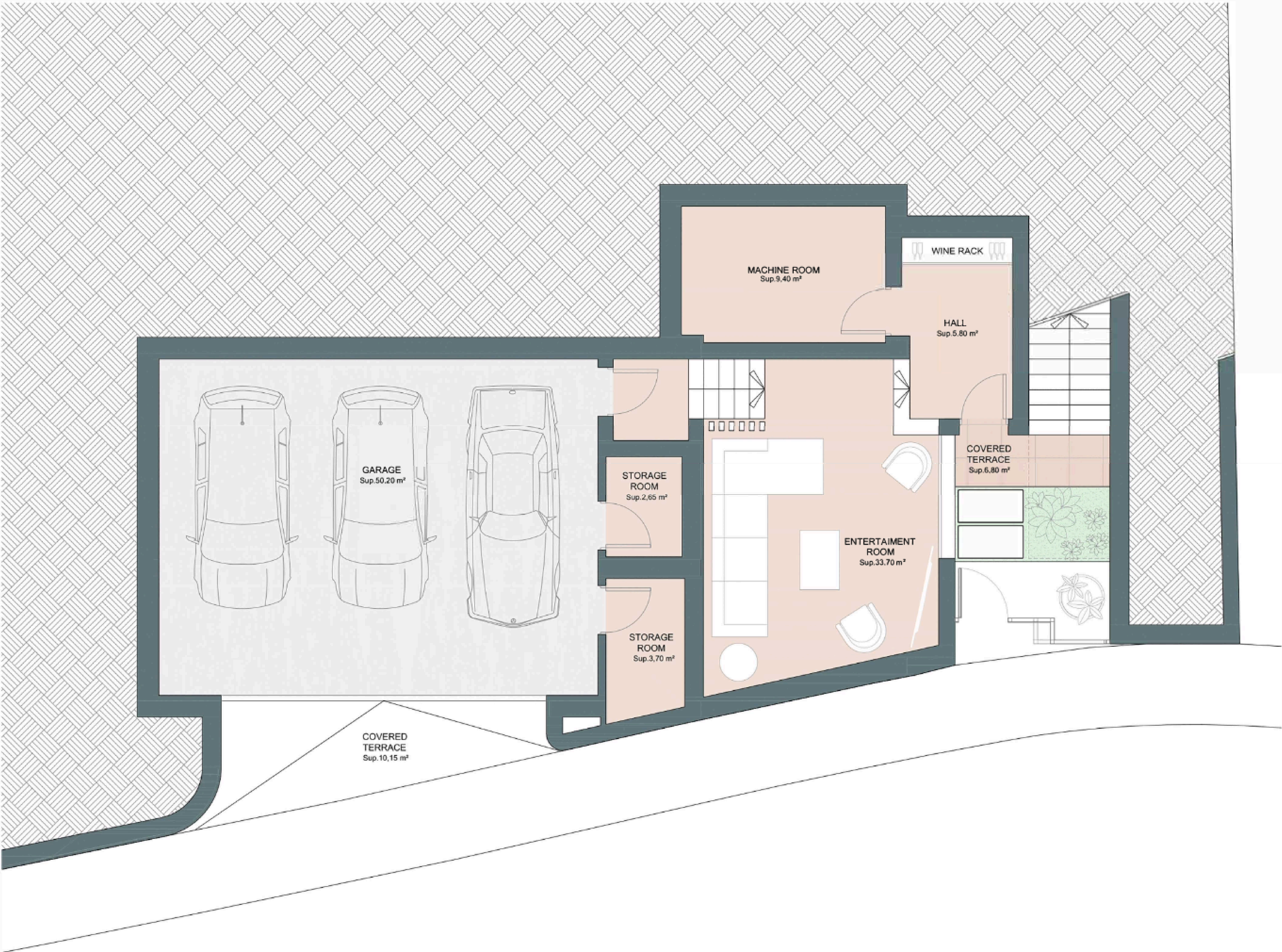


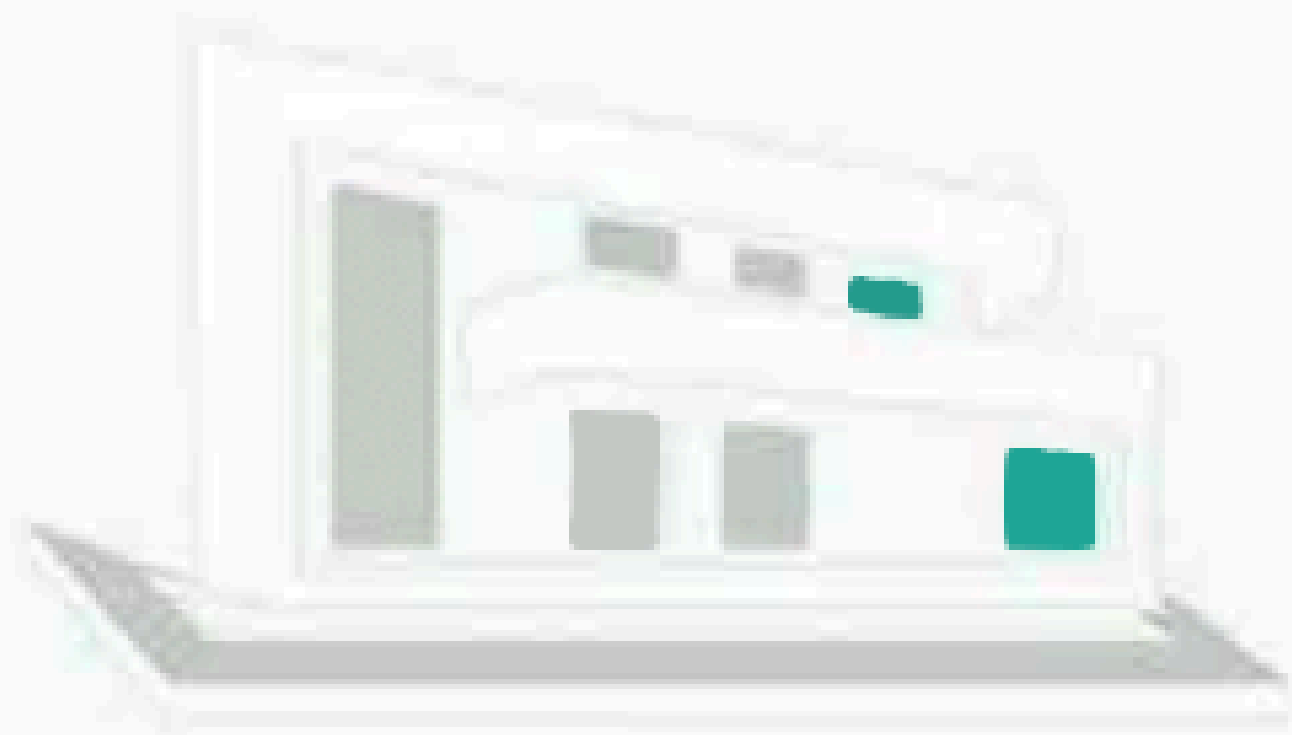
CHRISTIE'S  
INTERNATIONAL REAL ESTATE

———— COSTA DEL SOL ————

Floor plans Ref. 2429



This document is for information only. The areas and measurements are approximate and may be modified for technical reasons and/or administrative issues. The room areas marked on the drawing are usable space.



Villa 1

Built closed area	341,75 m <sup>2</sup>
Covered terrace	36,40 m <sup>2</sup>
Open terrace	247,00 m <sup>2</sup>
Total terrace	283,40 m <sup>2</sup>
Pool	37,25 m <sup>2</sup>

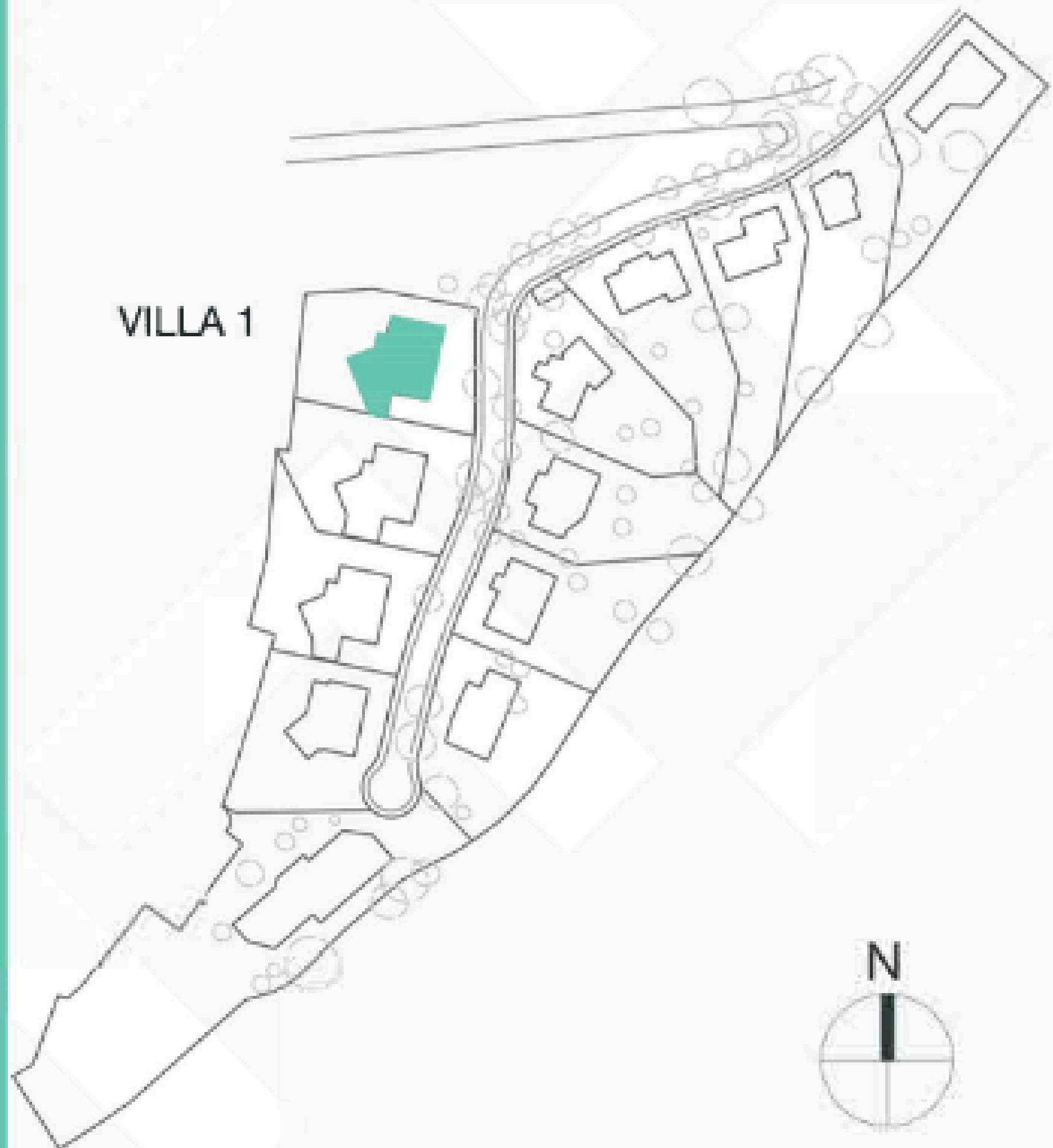
Total built area 662,40 m<sup>2</sup>

  
4

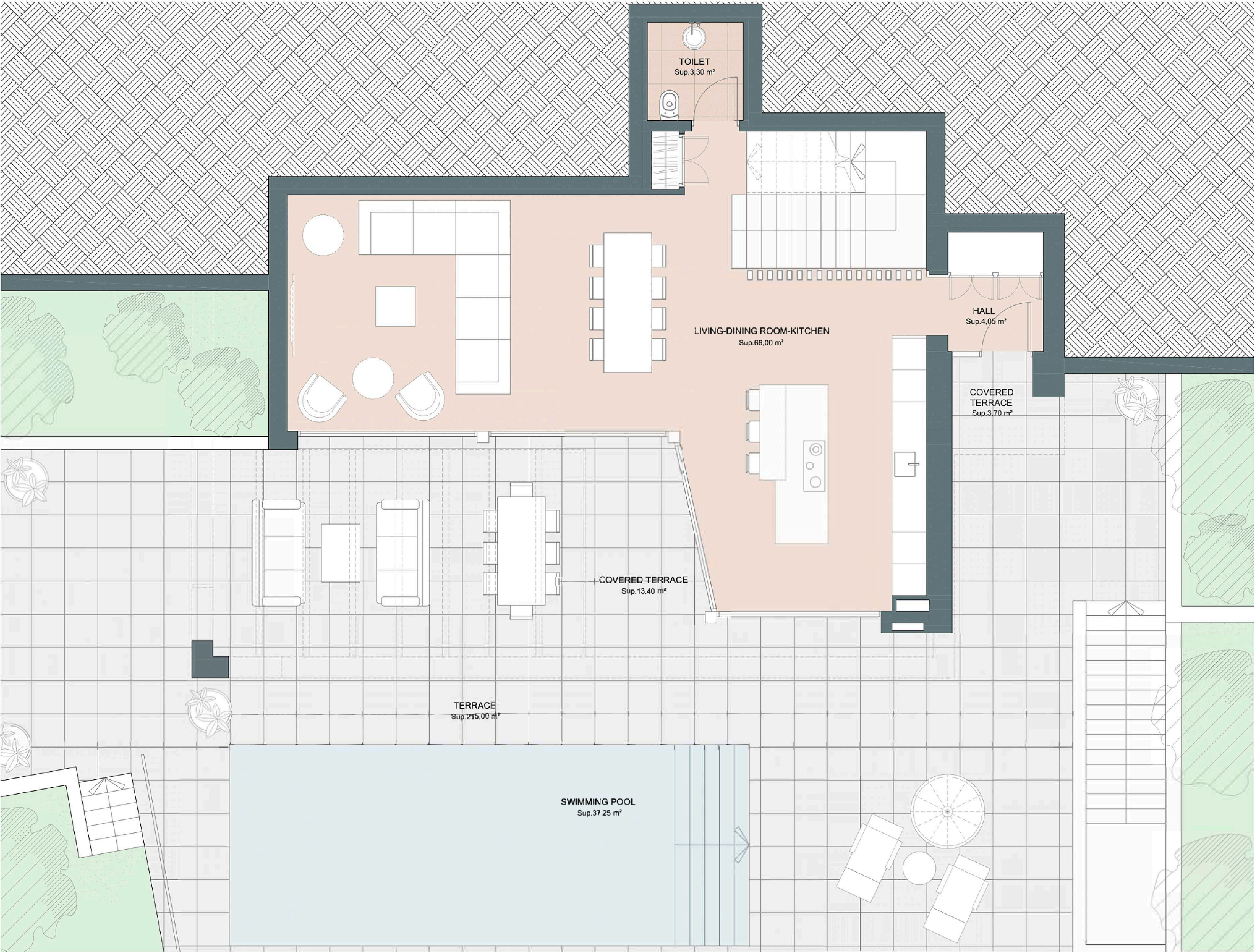
  
3

  
341,75 m<sup>2</sup>

  
3







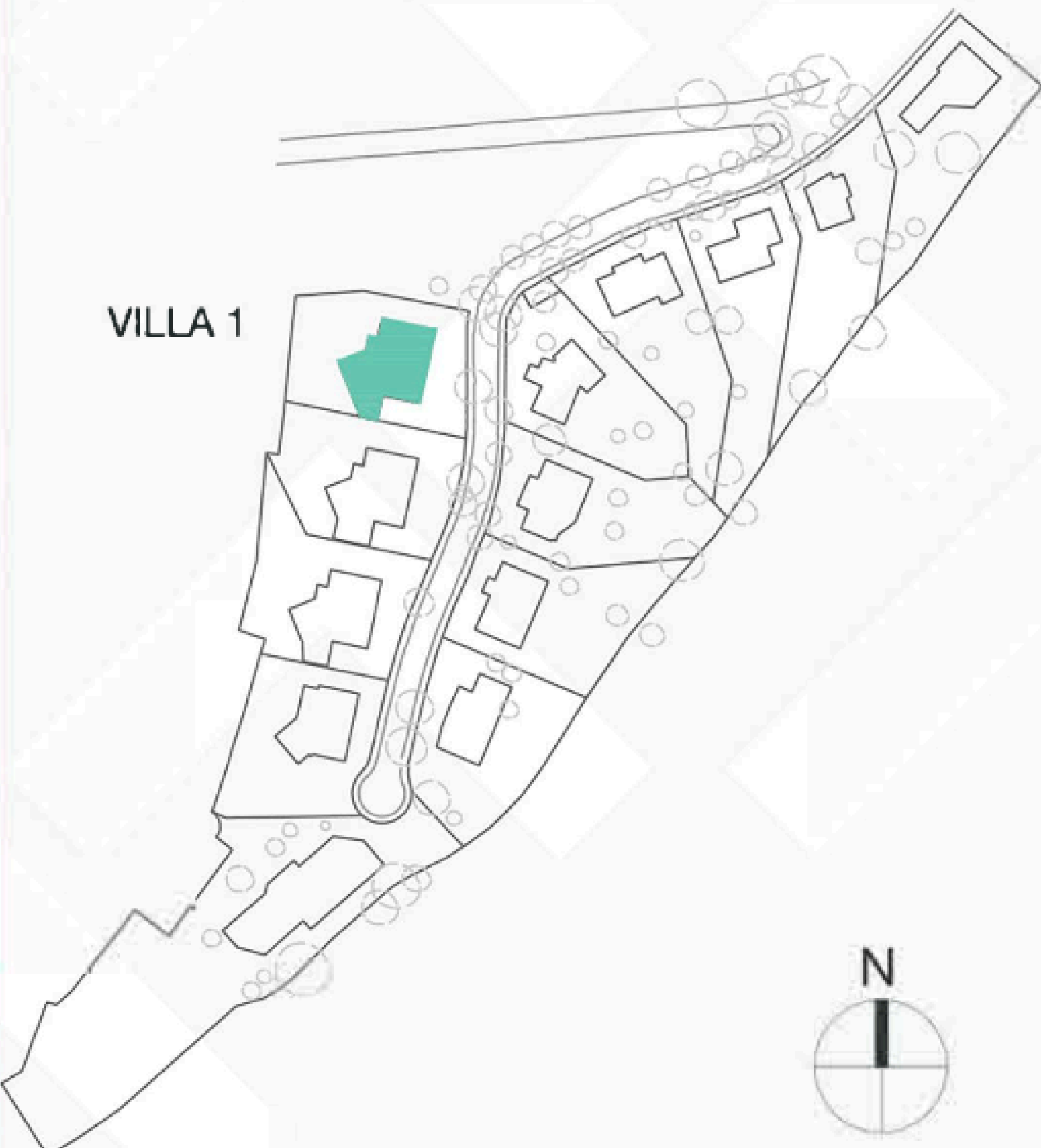
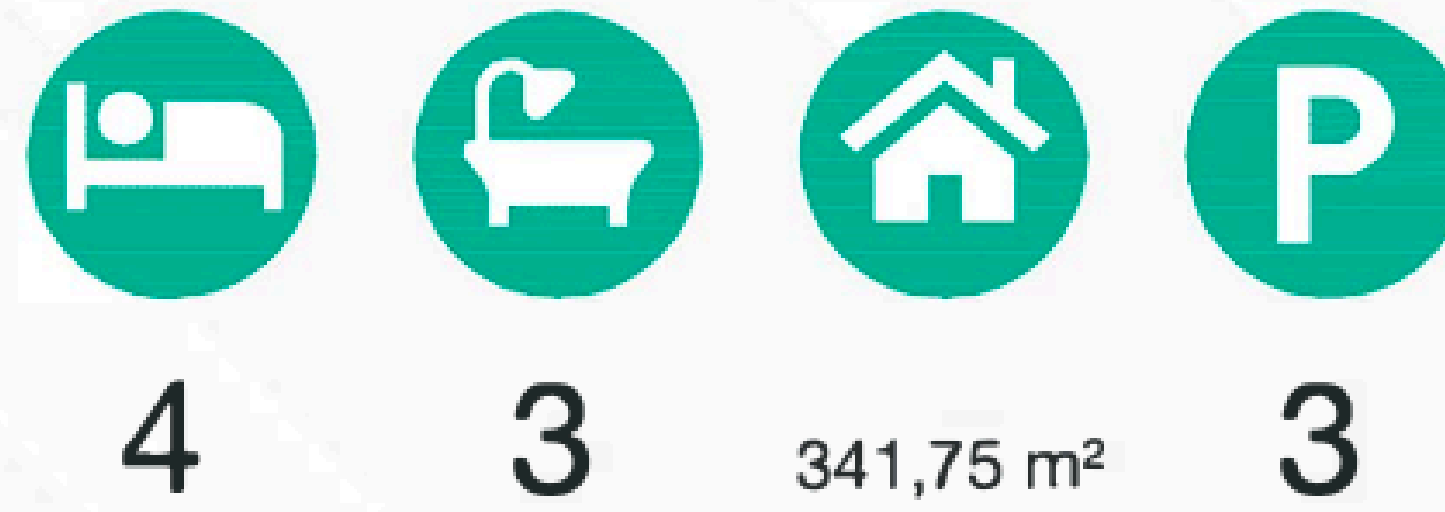
This document is for information only. The areas and measurements are approximate and may be modified for technical reasons and/or administrative issues. The room areas marked on the drawing are usable space.

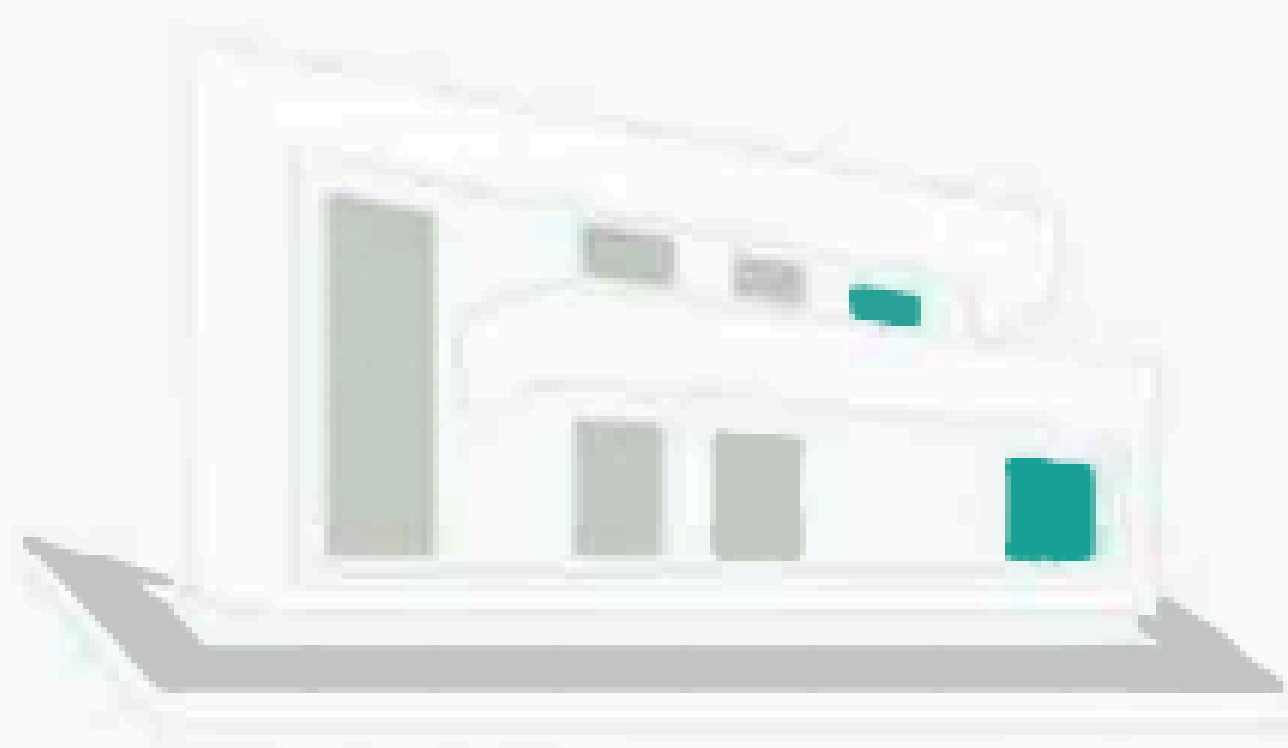


Villa 1

Built closed area	341,75 m <sup>2</sup>
Covered terrace	36,40 m <sup>2</sup>
Open terrace	247,00 m <sup>2</sup>
Total terrace	283,40 m <sup>2</sup>
Pool	37,25 m <sup>2</sup>

**Total built area** 662,40 m<sup>2</sup>





Villa 1

Built closed area	341,75 m²
Covered terrace	36,40 m²
Open terrace	247,00 m²
Total terrace	283,40 m²
Pool	37,25 m²
<b>Total built area</b>	<b>662,40 m²</b>

  
4

  
3

  
341,75 m²

  
3



CHRISTIE'S  
INTERNATIONAL REAL ESTATE  
—— COSTA DEL SOL ——

Where *Luxury* lives

Velázquez, 1, 29602 Marbella, España  
+34 951 122 313 | marbella@cire-costadelsol.com

Paseo de Reding, 25, 29016 Málaga, España  
+34 951 122 312 | malaga@cire-costadelsol.com