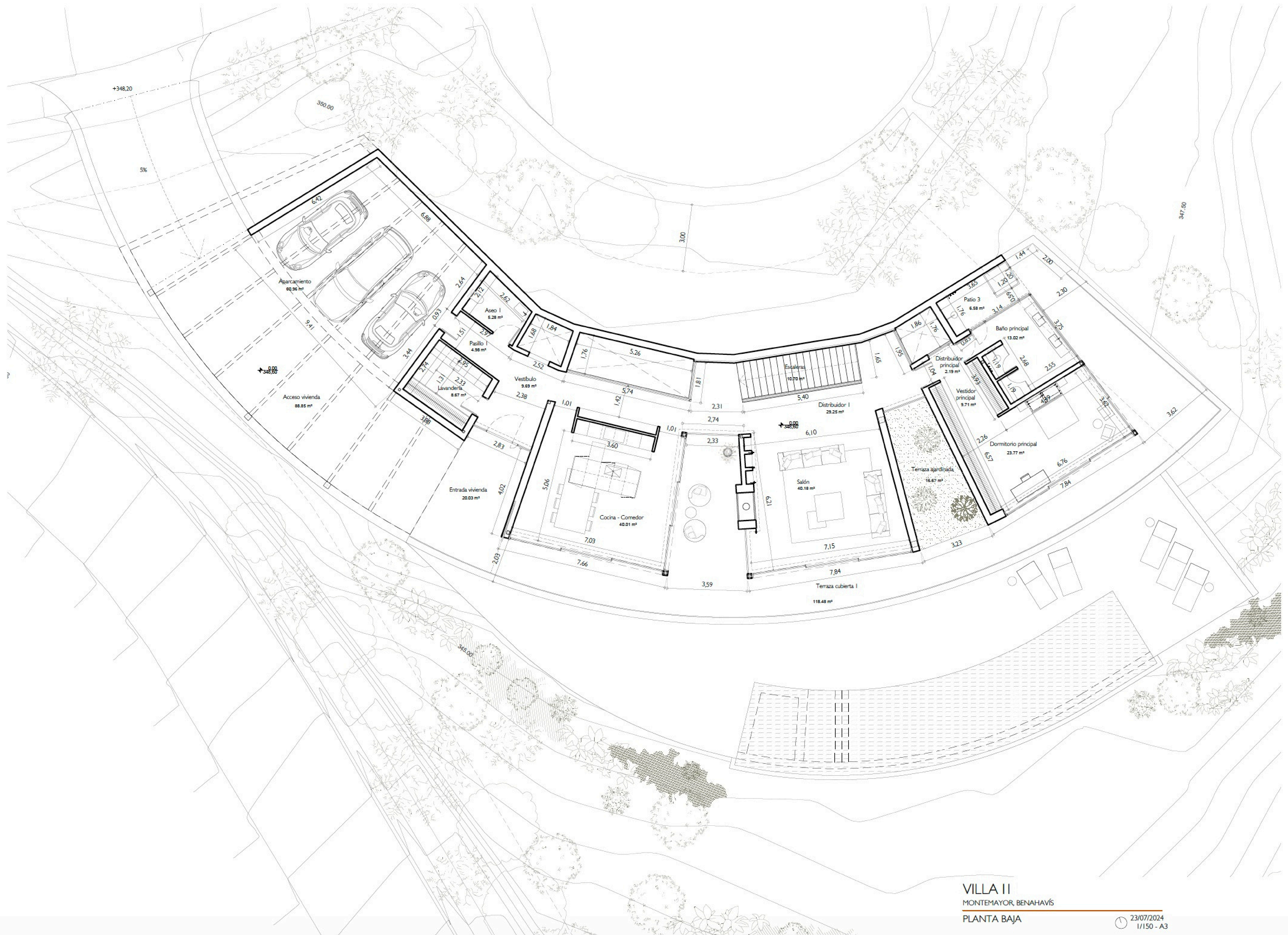


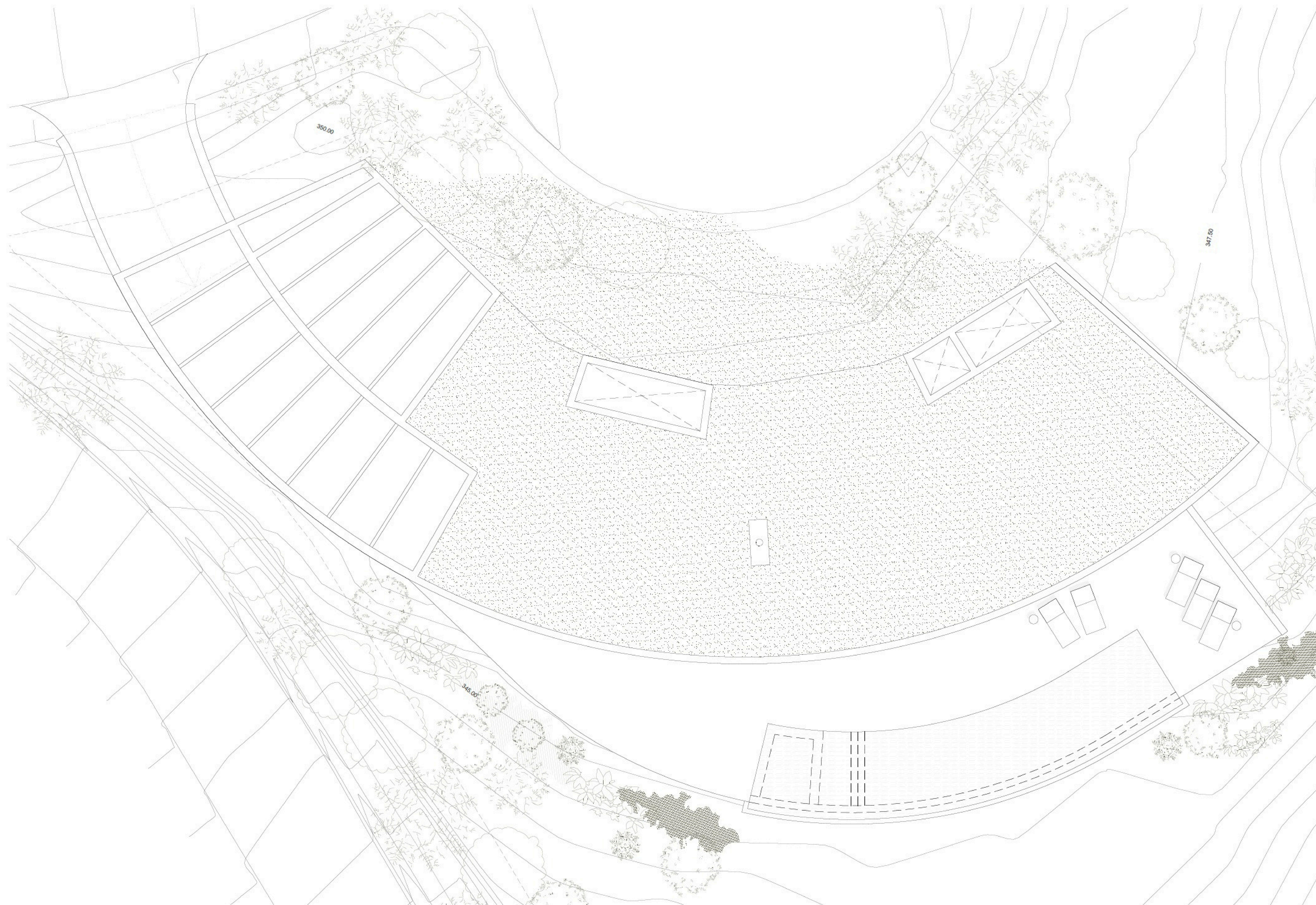
CHRISTIE'S
INTERNATIONAL REAL ESTATE
———— COSTA DEL SOL ————

Floor plans Ref 2478

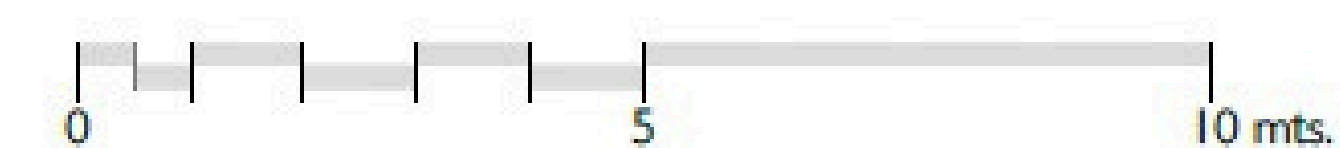




VILLA II
MONTEMAYOR, BENAHAVÍS
PLANTA SÓTANO



Floor plans, areas and room dimensions are indicative only and subject to change, construction variances and tolerances. In line with our policy of continuous improvement we reserve the right to alter the layout, building style landscaping and specifications at any time without notice.

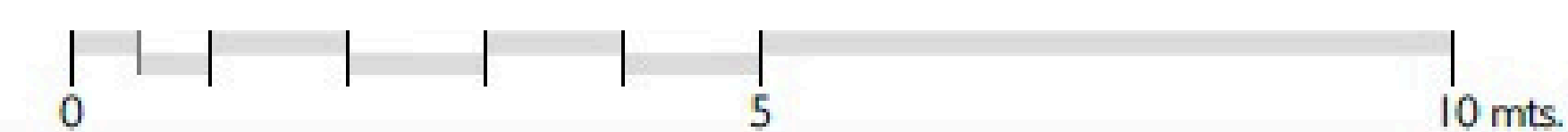


VILLA II
MONTE MAYOR, BENAHAVÍS
PLOT PLAN





Floor plans, areas and room dimensions are indicative only and subject to change, construction variances and tolerances. In line with our policy of continuous improvement we reserve the right to alter the layout, building style landscaping and specifications at any time without notice.

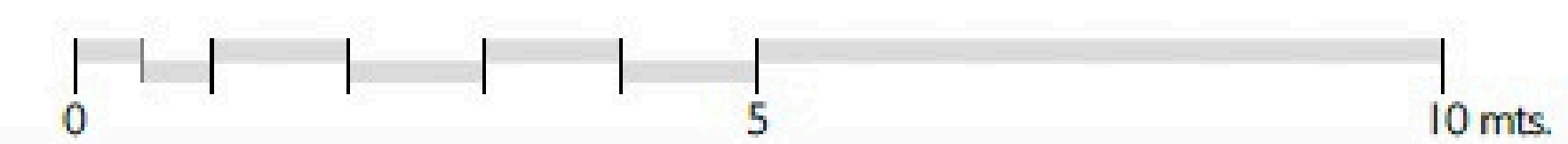


VILLA II
MONTE MAYOR, BENAHAVÍS
MAIN FLOOR

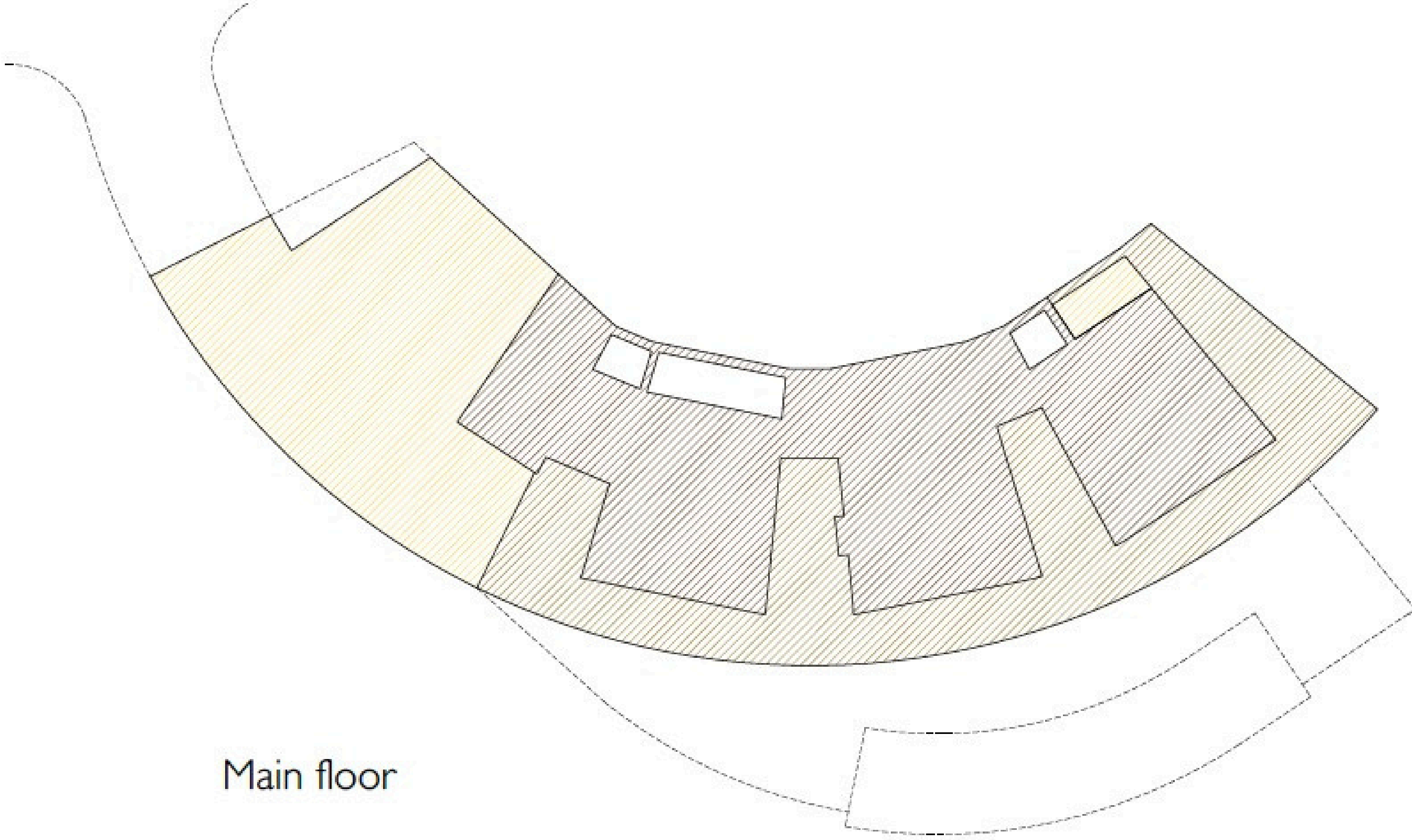




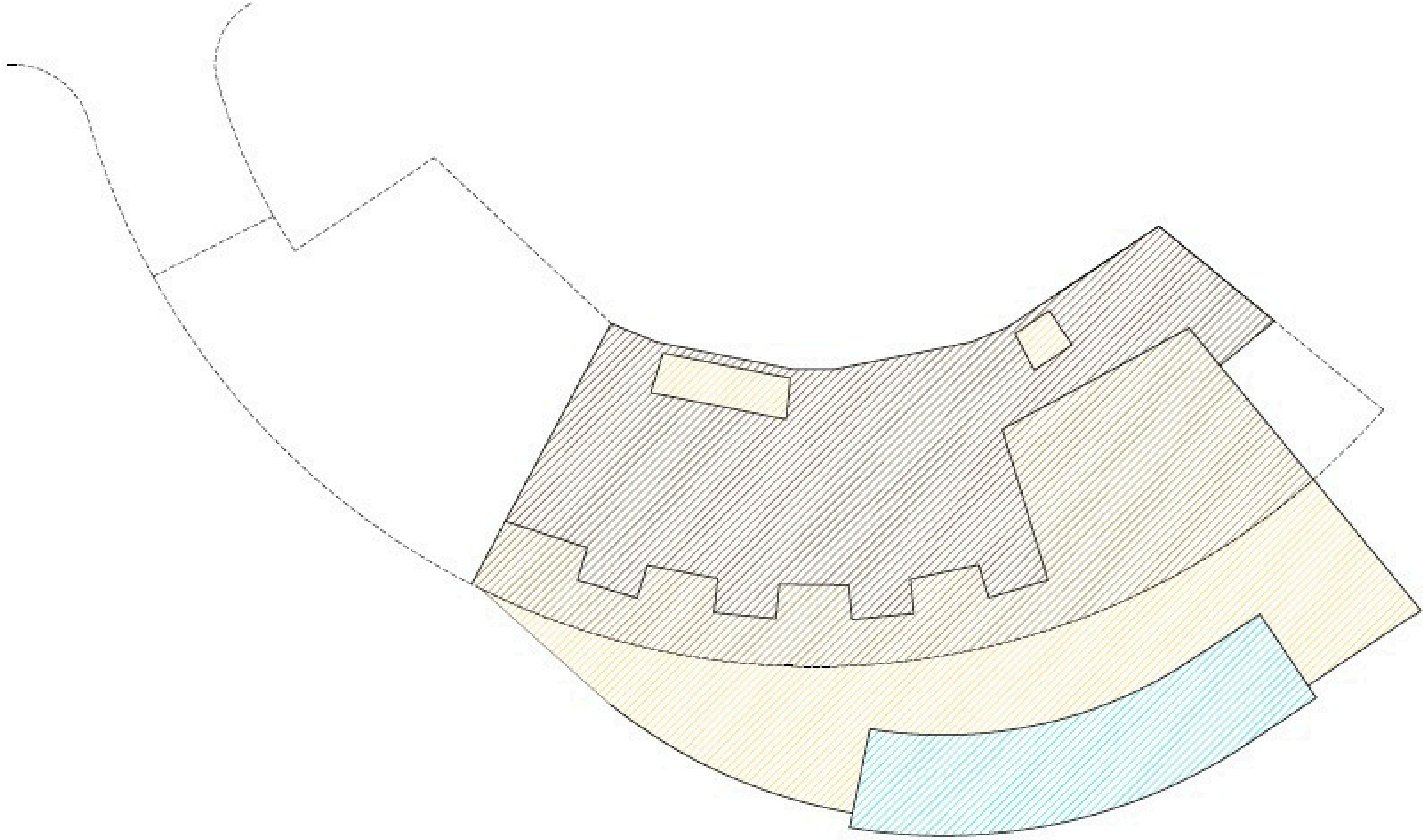
Floor plans, areas and room dimensions are indicative only and subject to change, construction variances and tolerances. In line with our policy of continuous improvement we reserve the right to alter the layout, building style landscaping and specifications at any time without notice.



VILLA II
MONTE MAYOR, BENAHAVÍS
LOWER FLOOR



Main floor



Lower floor

FLOOR SURFACE: HOUSE		
Main floor		233,01 m ²
Lower floor		211,14 m ²
TOTAL		444,15 m ²

FLOOR SURFACE: COVERED TERRACES		
Main floor		160,15 m ²
Lower floor		149,15 m ²
TOTAL		309,30 m ²

FLOOR SURFACE: UNCOVERED TERRACES		
Main floor		159,41 m ²
Lower floor		154,83 m ²
TOTAL		314,24 m ²

POOL SURFACE		
Lower floor		70,45 m ²
TOTAL		70,45 m ²

TOTAL FLOOR SURFACE	1.138,14 m ²
TOTAL PLOT SIZE	2.219,00 m ²

Floor plans, areas and room dimensions are indicative only and subject to change, construction variances and tolerances. In line with our policy of continuous improvement we reserve the right to alter the layout, building style, landscaping and specifications at any time without notice.

CHRISTIE'S
INTERNATIONAL REAL ESTATE
———— COSTA DEL SOL ————

Where *Luxury* lives

Velázquez, 1, 29602 Marbella, España
+34 951 122 313 | marbella@cire-costadelsol.com

Paseo de Reding, 25, 29016 Málaga, España
+34 951 122 312 | malaga@cire-costadelsol.com