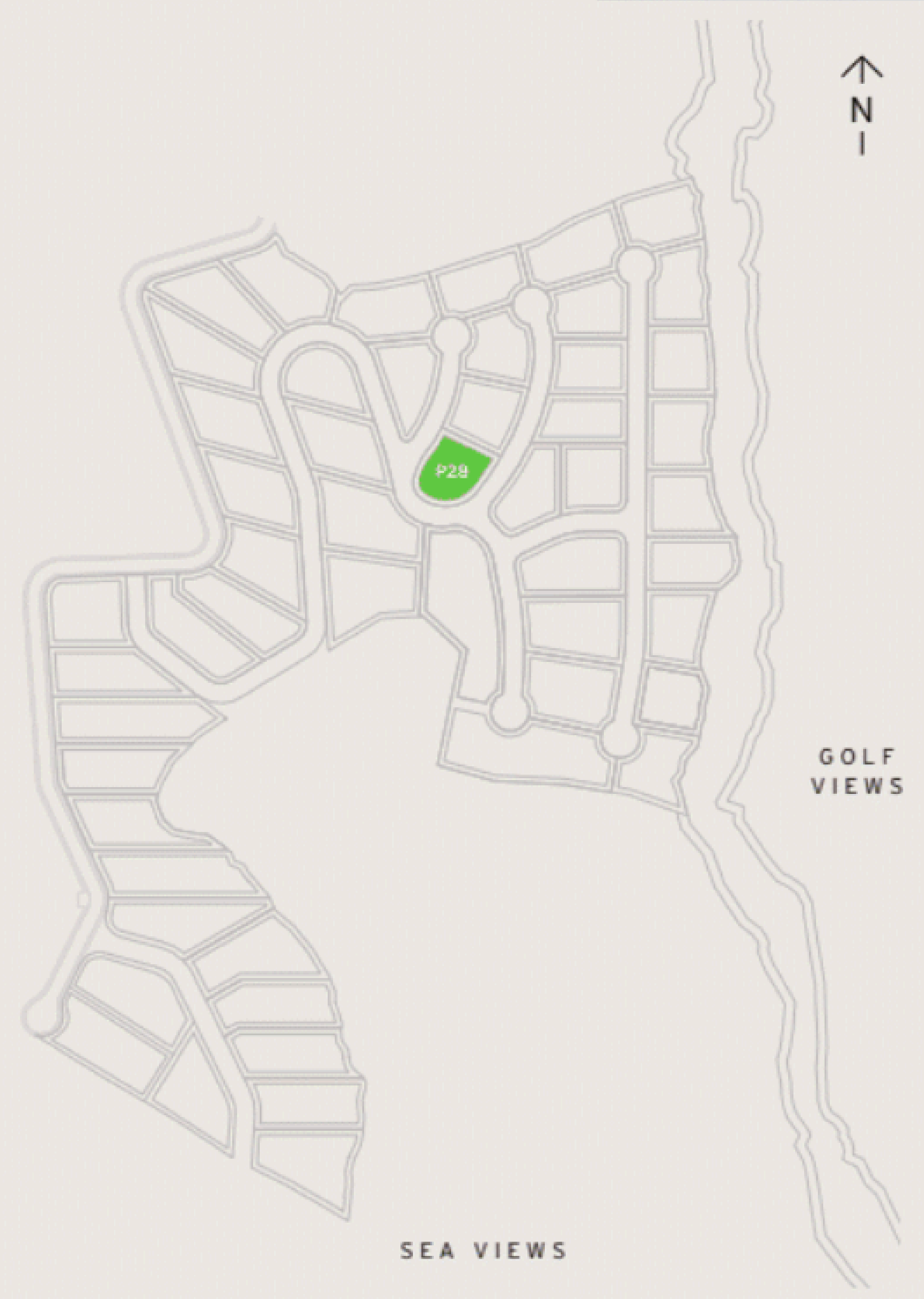


CHRISTIE'S
INTERNATIONAL REAL ESTATE
———— COSTA DEL SOL ————

Floor plans Ref 2067

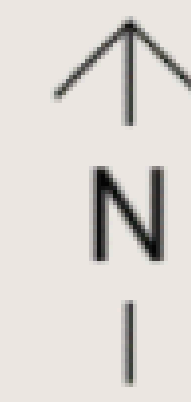
P 28 VIEW



VILLAS

4 - B E D

Disclaimer: All pictures, plans, layouts, information, data and details included in this brochure are indicative only and may change at any time up to the final 'as built' status in accordance with final designs of the project, regulatory approvals and planning permissions. All accessories and interior finishes such as wallpaper, chandeliers, furniture, electronics, white goods, curtains, hard and soft landscaping, pavements, features, gym, and other elements displayed in the brochure, or between the plot boundary, are not part of the unit and are shown for illustrative purposes only.



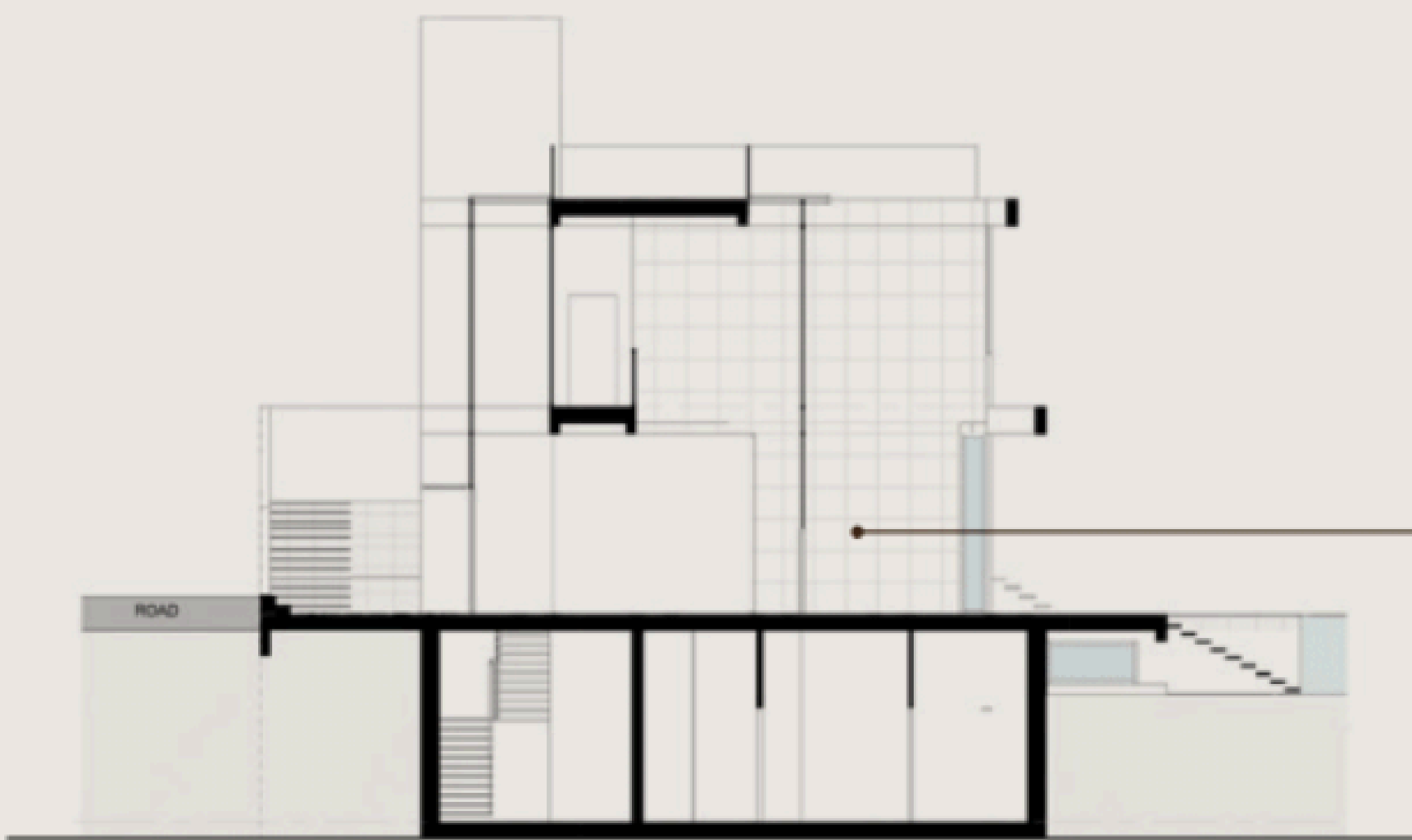
GOLF VIEWS

SEA VIEWS

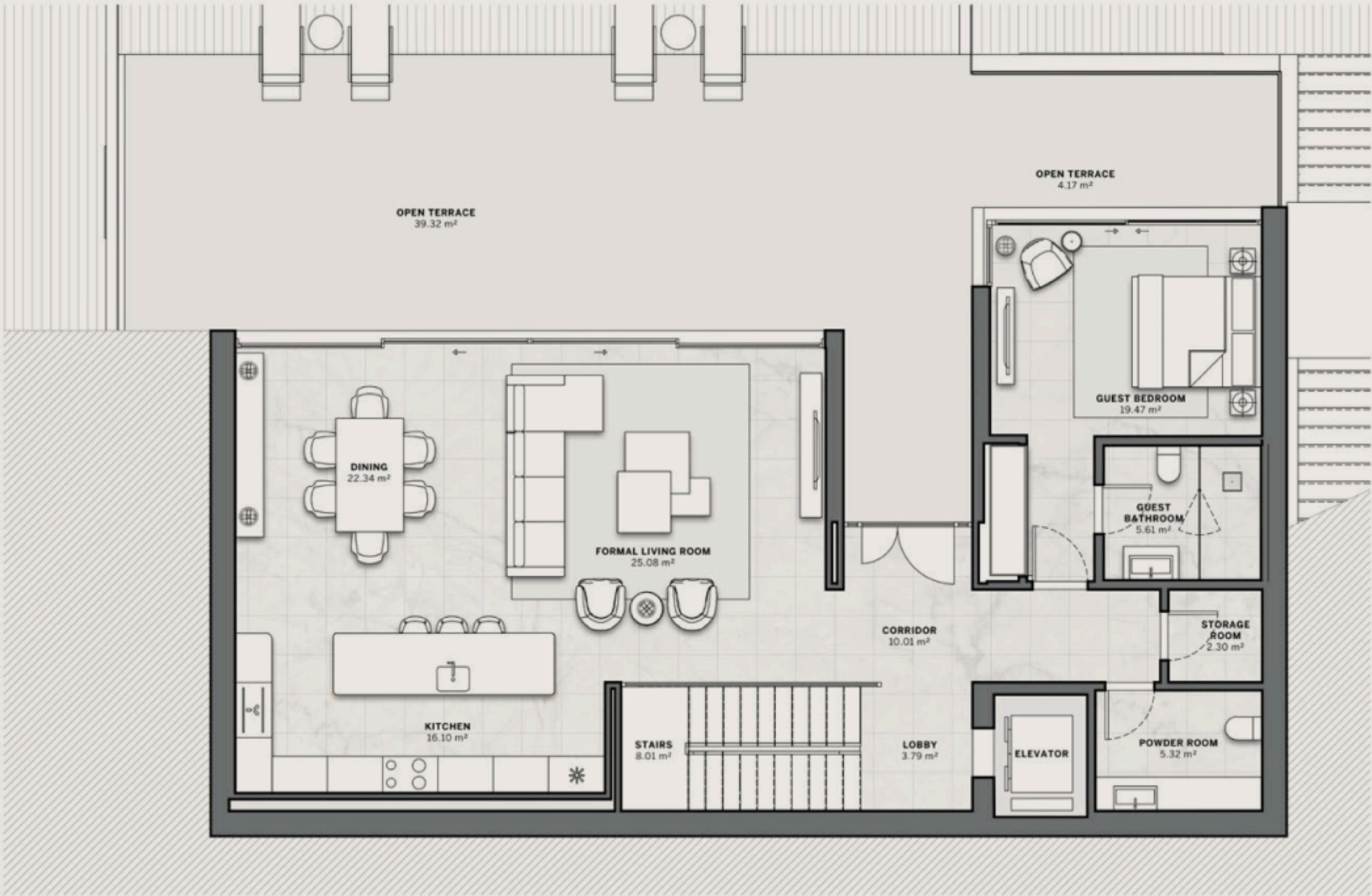
VILLAS

4 - B E D	S Q M 6 8 0 - 8 2 2
	S Q F T 7 , 3 2 0 - 8 , 8 4 8
P L O T S I Z E	
S Q M	1 , 0 0 5 - 1 , 6 6 9
S Q F T	1 0 , 8 1 8 - 1 7 , 9 6 5

Including total indoor & outdoor built up area.



GROUND
FLOOR



Disclaimer: All pictures, plans, layouts, information, data and details included in this brochure are indicative only and may change at any time up to the final 'as built' status in accordance with final designs of the project, regulatory approvals and planning permissions. All accessories and interior finishes such as wallpaper, chandeliers, furniture, electronics, white goods, curtains, hard and soft landscaping, pavements, features, gym, and other elements displayed in the brochure, or between the plot boundary, are not part of the unit and are shown for illustrative purposes only.

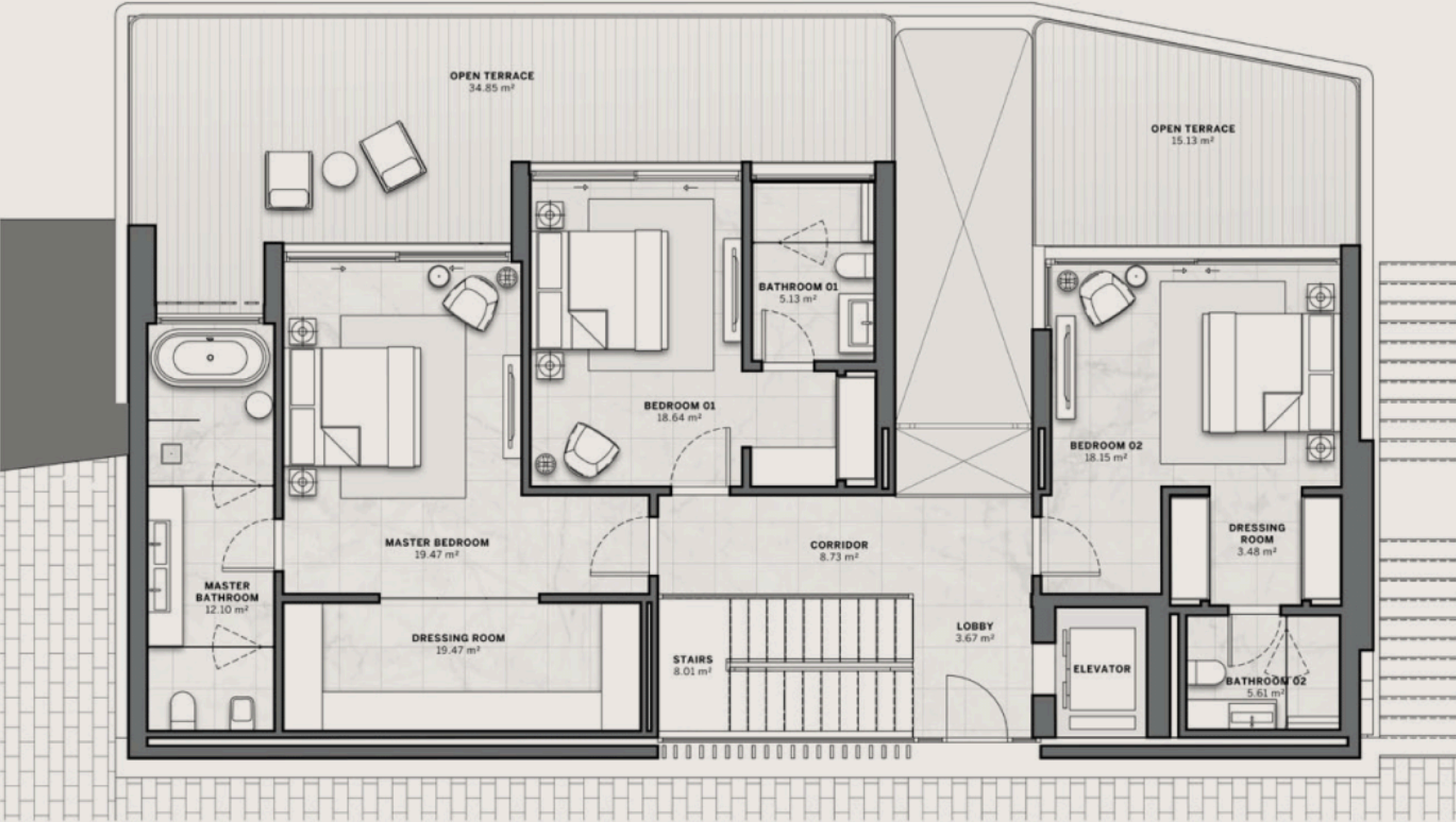
VILLAS

4 - BED	SQM 680 - 822
	SQFT 7,320 - 8,848
PLOT SIZE	
SQM	1,005 - 1,669
SQFT	10,818 - 17,965

Including total indoor & outdoor built up area.



FIRST
FLOOR



Disclaimer: All pictures, plans, layouts, information, data and details included in this brochure are indicative only and may change at any time up to the final 'as built' status in accordance with final designs of the project, regulatory approvals and planning permissions. All accessories and interior finishes such as wallpaper, chandeliers, furniture, electronics, white goods, curtains, hard and soft landscaping, pavements, features, gym, and other elements displayed in the brochure, or between the plot boundary, are not part of the unit and are shown for illustrative purposes only.

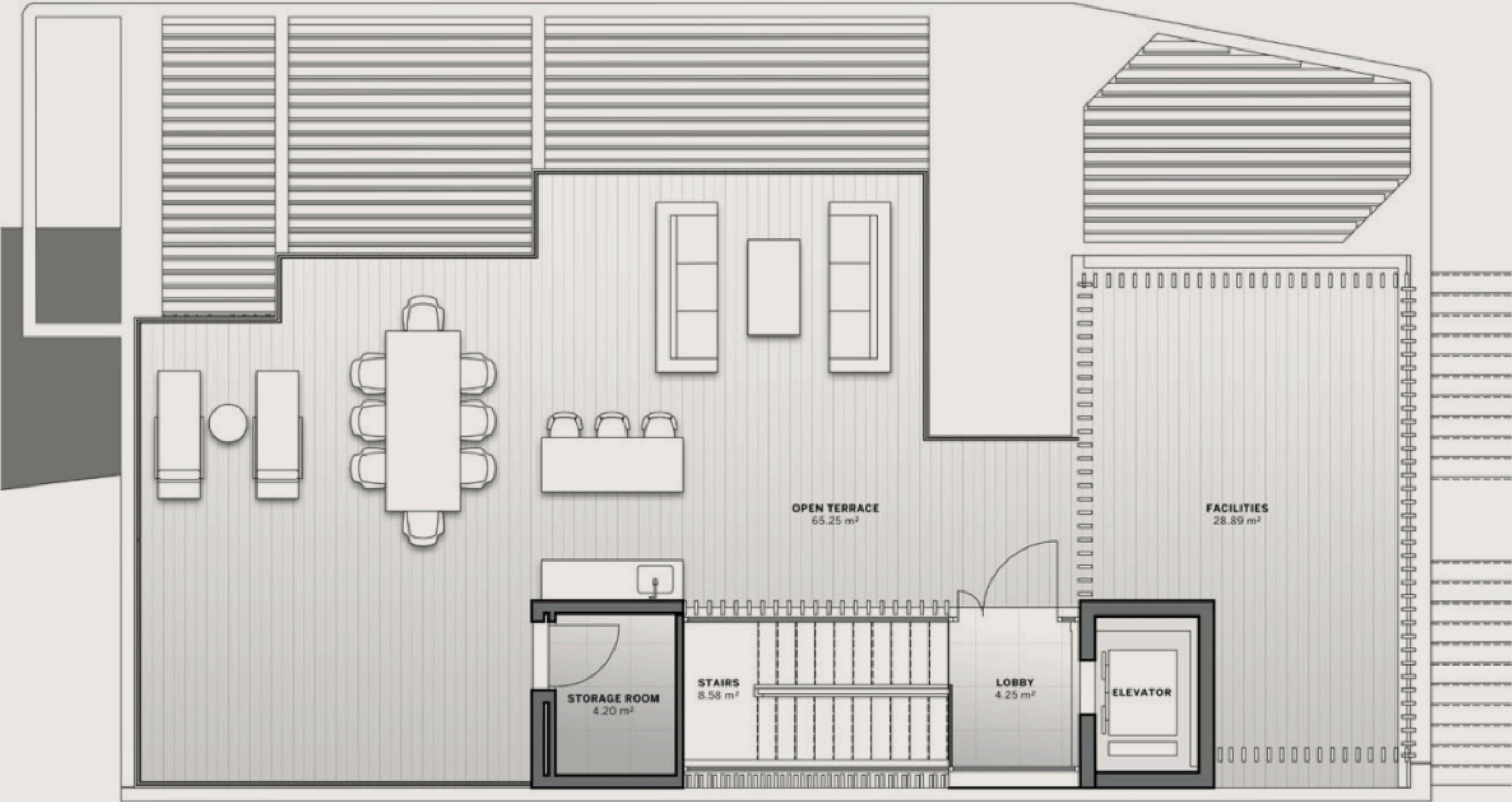
VILLAS

4 - B E D	S Q M 6 8 0 - 8 2 2
	S Q F T 7,320 - 8,848
P L O T S I Z E	
S Q M	1,005 - 1,669
S Q F T	10,818 - 17,965

Including total indoor & outdoor built up area.



ROOFTOP
TERRACE



Disclaimer: All pictures, plans, layouts, information, data and details included in this brochure are indicative only and may change at any time up to the final 'as built' status in accordance with final designs of the project, regulatory approvals and planning permissions. All accessories and interior finishes such as wallpaper, chandeliers, furniture, electronics, white goods, curtains, hard and soft landscaping, pavements, features, gym, and other elements displayed in the brochure, or between the plot boundary, are not part of the unit and are shown for illustrative purposes only.

VILLAS

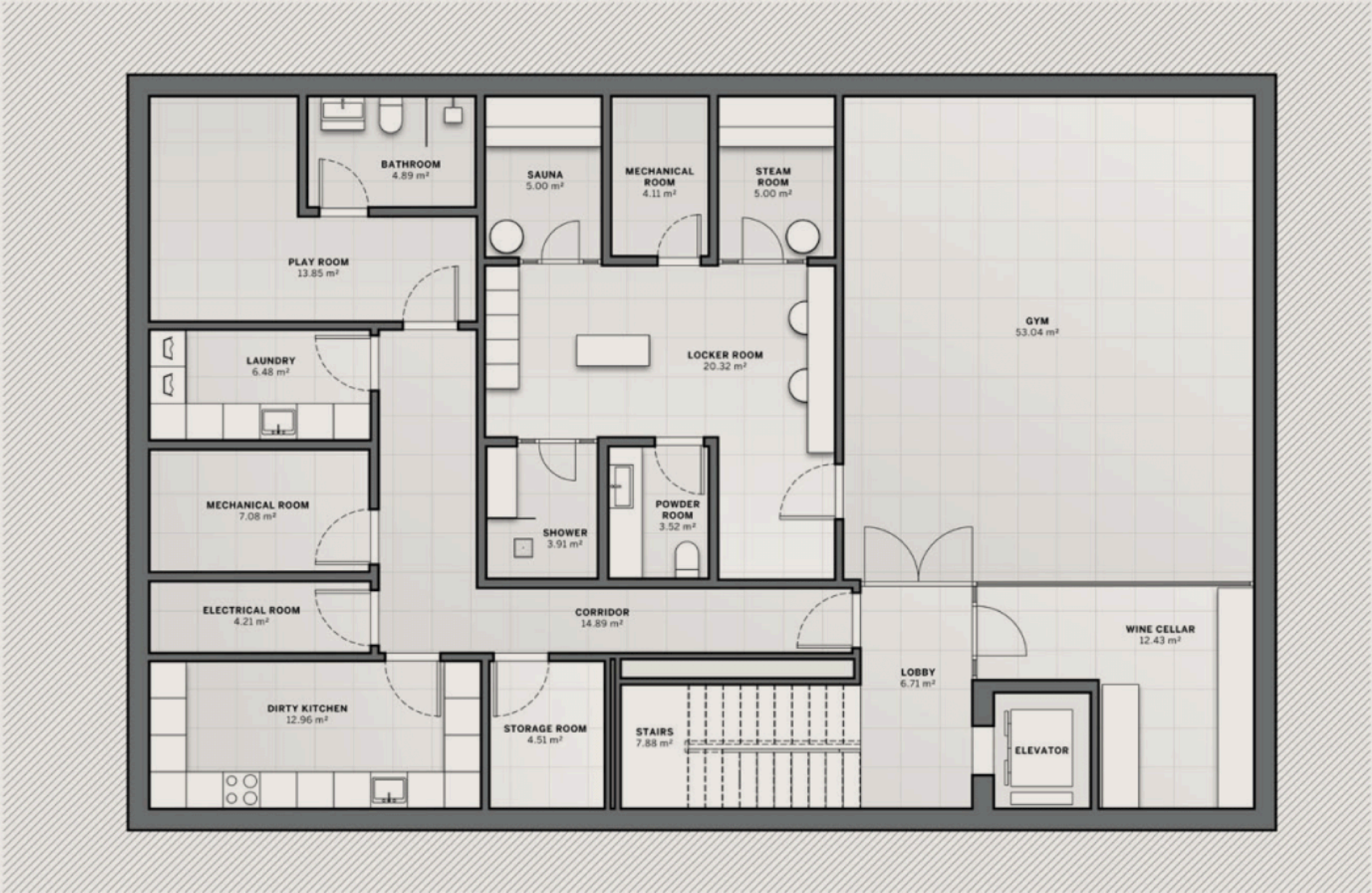
4 - B E D	S Q M 6 8 0 - 8 2 2
	S Q F T 7,320 - 8,848
P L O T S I Z E	
S Q M	1,005 - 1,669
S Q F T	10,818 - 17,965

Including total indoor & outdoor built up area.



BASEMENT

Disclaimer: All pictures, plans, layouts, information, data and details included in this brochure are indicative only and may change at any time up to the final 'as built' status in accordance with final designs of the project, regulatory approvals and planning permissions. All accessories and interior finishes such as wallpaper, chandeliers, furniture, electronics, white goods, curtains, hard and soft landscaping, pavements, features, gym, and other elements displayed in the brochure, or between the plot boundary, are not part of the unit and are shown for illustrative purposes only.



CHRISTIE'S
INTERNATIONAL REAL ESTATE
———— COSTA DEL SOL ————

Where *Luxury* lives

Velázquez, 1, 29602 Marbella, España
+34 951 122 313 | marbella@cire-costadelsol.com

Paseo de Reding, 25, 29016 Málaga, España
+34 951 122 312 | malaga@cire-costadelsol.com