

CHRISTIE'S  
INTERNATIONAL REAL ESTATE  
———— COSTA DEL SOL ————

Floor plans Ref 2480

## VILLA 1 SOLARIUM

Plot Surface 1042,36 sqm

Basement 312,62 sqm

Ground Floor 114,93 sqm

Upper Floor 132,70 sqm

Solarium 35,86 sqm

**Total Interior 596,11 sqm**

Covered Terraces 82,10 sqm

Uncovered Terraces 205,33 sqm

Exterior Parking 40,40 sqm

Swimming Pool 45,57 sqm

Garden Courtyard 10,00 sqm

**Total Exterior 383,40 sqm**

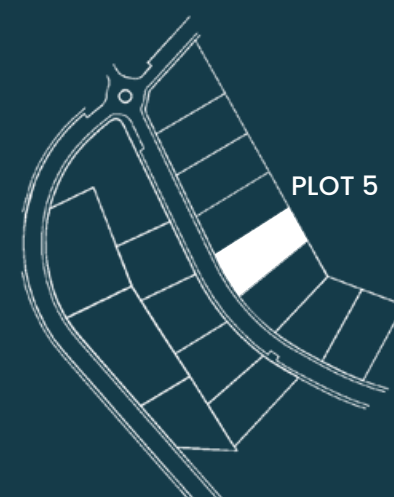
**Total Exterior & Interior\* 979,51 sqm**

Bedrooms 3

Bathrooms 4

Toilets 1

Exterior Parking 2 cars



\*All the surfaces detailed in this floor plan correspond to built areas. The floor plan above is not final as it has been designed in accordance with the Building Execution Project and, consequently, THE VIEW CHASE DEVELOPMENT I.S.L. reserves the right to include whatever changes due to technical and/or legal imperatives required by any public Administration or Agency. These changes, in any case, will be in accordance with the progress of the construction work. The accessory elements (for example, including the kitchen) are merely for illustrative purposes. The rotation sense of doors and the distribution of sanitary fittings are not binding. The surface areas shown are approximate and, may be altered for technical and/or legal reasons in the course of the construction work.



## VILLA 1 UPPER FLOOR

Plot Surface 1042,36 sqm

Basement 312,62 sqm

Ground Floor 114,93 sqm

Upper Floor 132,70 sqm

Solarium 35,86 sqm

**Total Interior 596,11 sqm**

Covered Terraces 82,10 sqm

Uncovered Terraces 205,33 sqm

Exterior Parking 40,40 sqm

Swimming Pool 45,57 sqm

Garden Courtyard 10,00 sqm

**Total Exterior 383,40 sqm**

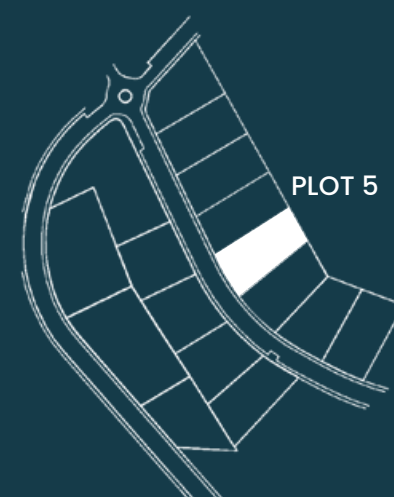
**Total Exterior & Interior\* 979,51 sqm**

Bedrooms 3

Bathrooms 4

Toilets 1

Exterior Parking 2 cars



\*All the surfaces detailed in this floor plan correspond to built areas. The floor plan above is not final as it has been designed in accordance with the Building Execution Project and, consequently, THE VIEW CHASE DEVELOPMENT I.S.L. reserves the right to include whatever changes due to technical and/or legal imperatives required by any public Administration or Agency. These changes, in any case, will be in accordance with the progress of the construction work. The accessory elements (for example, including the kitchen) are merely for illustrative purposes. The rotation sense of doors and the distribution of sanitary fittings are not binding. The surface areas shown are approximate and, may be altered for technical and/or legal reasons in the course of the construction work.



## VILLA 1 GROUND FLOOR

Plot Surface 1042,36 sqm

Basement 312,62 sqm

Ground Floor 114,93 sqm

Upper Floor 132,70 sqm

Solarium 35,86 sqm

**Total Interior 596,11 sqm**

Covered Terraces 82,10 sqm

Uncovered Terraces 205,33 sqm

Exterior Parking 40,40 sqm

Swimming Pool 45,57 sqm

Garden Courtyard 10,00 sqm

**Total Exterior 383,40 sqm**

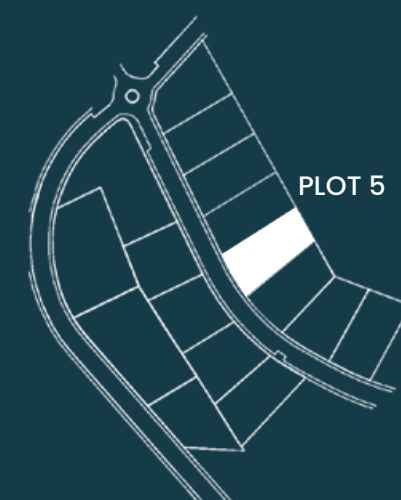
**Total Exterior & Interior\* 979,51 sqm**

Bedrooms 3

Bathrooms 4

Toilets 1

Exterior Parking 2 cars



\*All the surfaces detailed in this floor plan correspond to built areas. The floor plan above is not final as it has been designed in accordance with the Building Execution Project and, consequently, THE VIEW CHASE DEVELOPMENT I.S.L. reserves the right to include whatever changes due to technical and/or legal imperatives required by any public Administration or Agency. These changes, in any case, will be in accordance with the progress of the construction work. The accessory elements (for example, including the kitchen) are merely for illustrative purposes. The rotation sense of doors and the distribution of sanitary fittings are not binding. The surface areas shown are approximate and, may be altered for technical and/or legal reasons in the course of the construction work.



VILLA 1  
BASEMENT

Plot Surface 1042,36 sqm

Basement 312,62 sqm

Ground Floor 114,93 sqm

Upper Floor 132,70 sqm

Solarium 35,86 sqm

**Total Interior 596,11 sqm**

Covered Terraces 82,10 sqm

Uncovered Terraces 205,33 sqm

Exterior Parking 40,40 sqm

Swimming Pool 45,57 sqm

Garden Courtyard 10,00 sqm

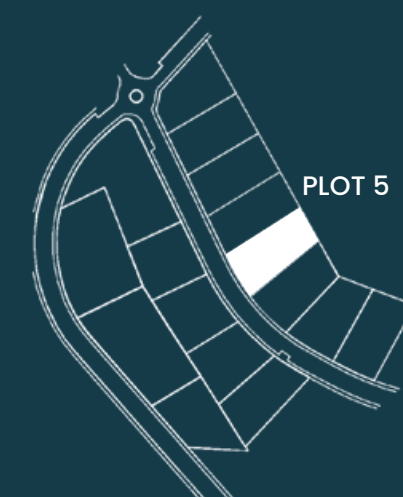
**Total Exterior 383,40 sqm****Total Exterior & Interior\* 979,51 sqm**

Bedrooms 3

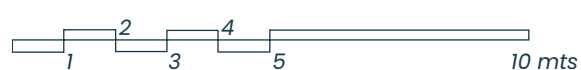
Bathrooms 4

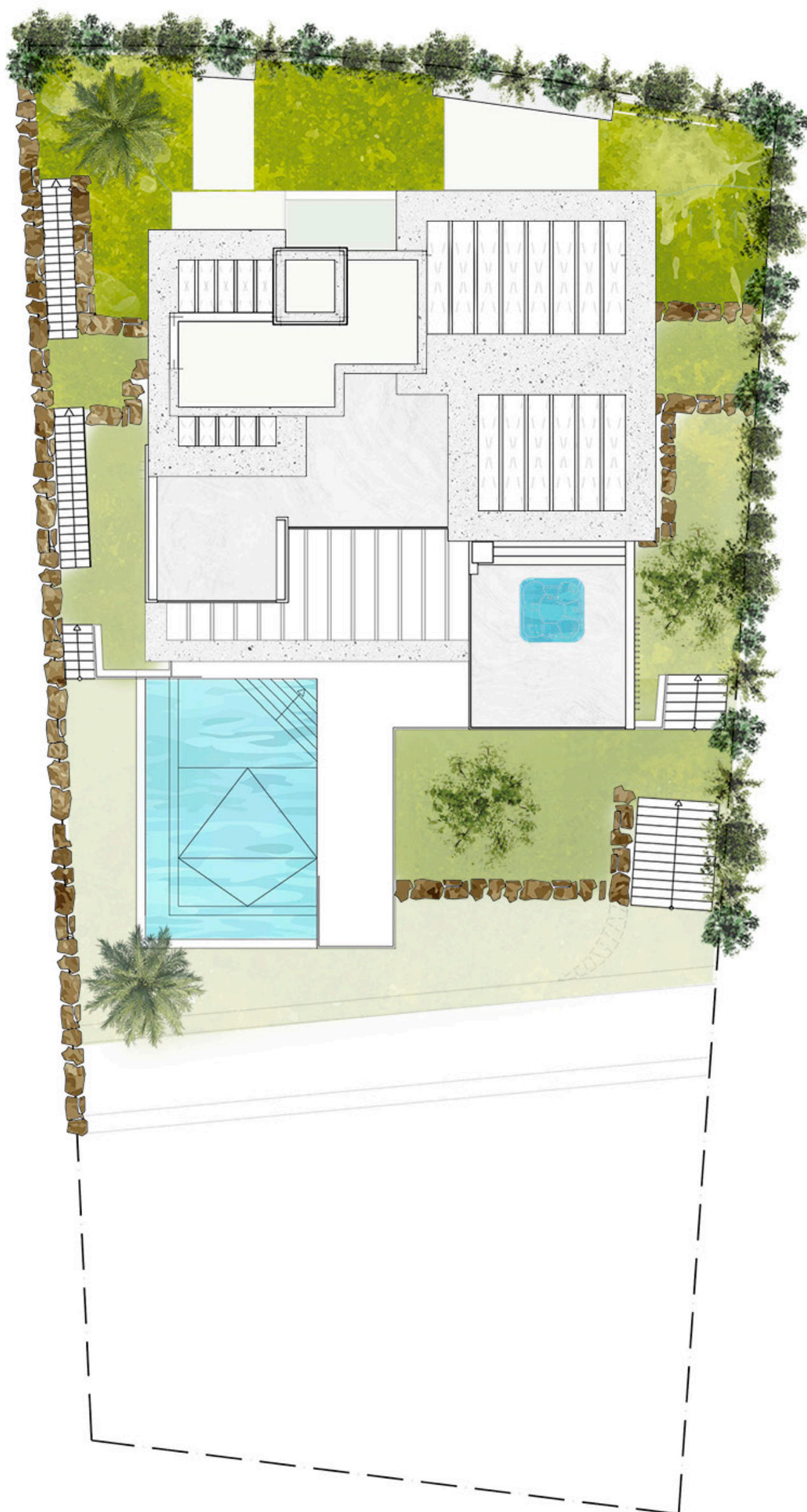
Toilets 1

Exterior Parking 2 cars



\*All the surfaces detailed in this floor plan correspond to built areas. The floor plan above is not final as it has been designed in accordance with the Building Execution Project and, consequently, THE VIEW CHASE DEVELOPMENT I S.L. reserves the right to include whatever changes due to technical and/or legal imperatives required by any public Administration or Agency. These changes, in any case, will be in accordance with the progress of the construction work. The accessory elements (for example, including the kitchen) are merely for illustrative purposes. The rotation sense of doors and the distribution of sanitary fittings are not binding. The surface areas shown are approximate and, may be altered for technical and/or legal reasons in the course of the construction work.





## LUXURY VILLAS

### VILLA 1 SITE PLAN

Plot Surface 1042,36 sqm

Basement 312,62 sqm

Ground Floor 114,93 sqm

Upper Floor 132,70 sqm

Solarium 35,86 sqm

**Total Interior 596,11 sqm**

Covered Terraces 82,10 sqm

Uncovered Terraces 205,33 sqm

Exterior Parking 40,40 sqm

Swimming Pool 45,57 sqm

Garden Courtyard 10,00 sqm

**Total Exterior 383,40 sqm**

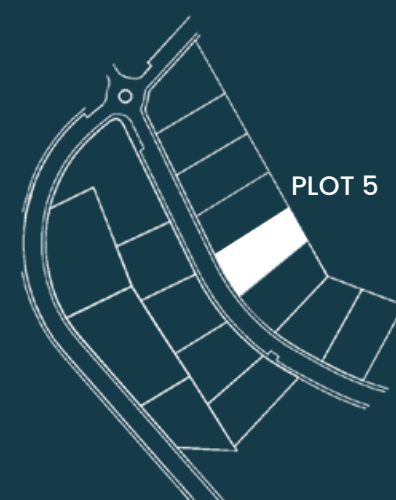
**Total Exterior & Interior\* 979,51 sqm**

Bedrooms 3

Bathrooms 4

Toilets 1

Exterior Parking 2 cars



\*All the surfaces detailed in this floor plan correspond to built areas. The floor plan above is not final as it has been designed in accordance with the Building Execution Project and, consequently, THE VIEW CHASE DEVELOPMENT I S.L. reserves the right to include whatever changes due to technical and/or legal imperatives required by any public Administration or Agency. These changes, in any case, will be in accordance with the progress of the construction work. The accessory elements (for example, including the kitchen) are merely for illustrative purposes. The rotation sense of doors and the distribution of sanitary fittings are not binding. The surface areas shown are approximate and, may be altered for technical and/or legal reasons in the course of the construction work.



Where *Luxury* lives

Velázquez, 1, 29602 Marbella, España  
+34 951 122 313 | [marbella@cire-costadelsol.com](mailto:marbella@cire-costadelsol.com)

Paseo de Reding, 25, 29016 Málaga, España  
+34 951 122 312 | [malaga@cire-costadelsol.com](mailto:malaga@cire-costadelsol.com)