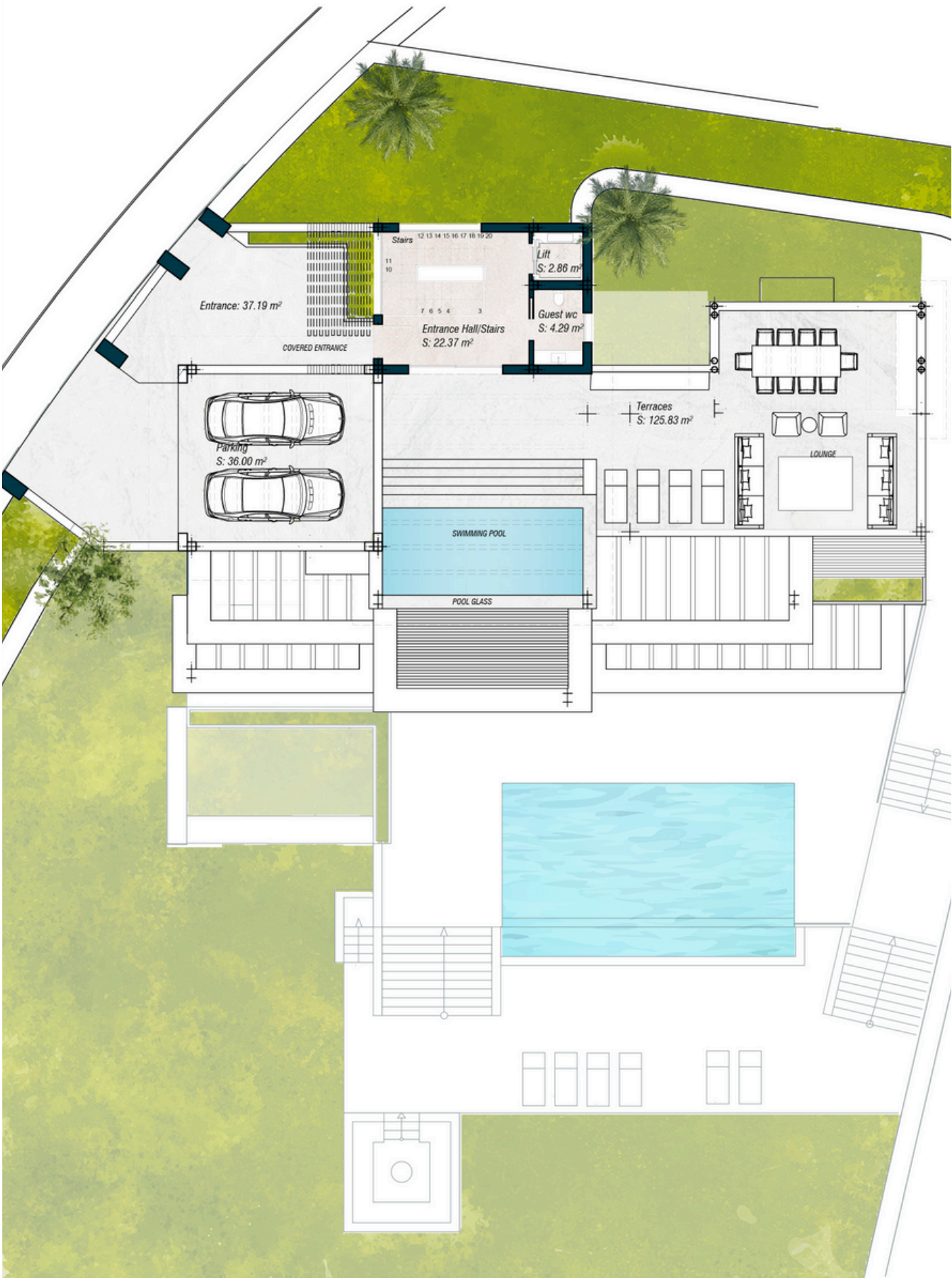


CHRISTIE'S
INTERNATIONAL REAL ESTATE
———— COSTA DEL SOL ————

Floor plans Ref 2496

VILLA 11
SOLARIUM



Plot Surface 2010,60 sqm

Basement 465,24 sqm

Ground Floor 304,03 sqm

Upper Floor 172,37 sqm

Solarium 34,88 sqm

Total Interior 976,52 sqm

Covered Terraces 27,00 sqm

Uncovered Terraces 314,67 sqm

Exterior Parking 101,08 sqm

Swimming Pool 75,64 sqm

Total Exterior 518,39 sqm

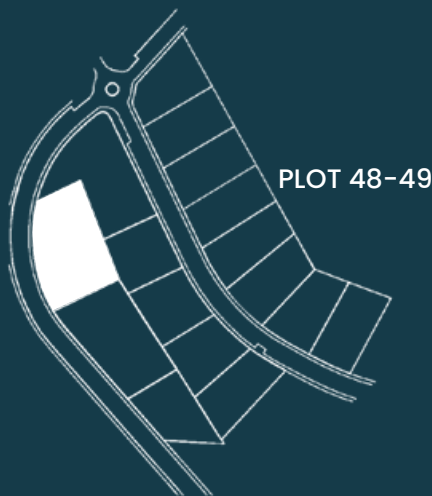
Total Exterior & Interior* 1494,91 sqm

Bedrooms 3

Bathrooms 3

Toilets 2

Exterior Parking 2 cars



*All the surfaces detailed in this floor plan correspond to built areas. The floor plan above is not final as it has been designed in accordance with the Building Execution Project and, consequently, THE VIEW CHASE DEVELOPMENT I S.L. reserves the right to include whatever changes due to technical and/or legal imperatives required by any public Administration or Agency. These changes, in any case, will be in accordance with the progress of the construction work. The accessory elements (for example, including the kitchen) are merely for illustrative purposes. The rotation sense of doors and the distribution of sanitary fittings are not binding. The surface areas shown are approximate and, may be altered for technical and/or legal reasons in the course of the construction work.



VILLA 11
UPPER FLOOR

Plot Surface 2010,60 sqm

Basement 465,24 sqm

Ground Floor 304,03 sqm

Upper Floor 172,37 sqm

Solarium 34,88 sqm

Total Interior 976,52 sqm

Covered Terraces 27,00 sqm

Uncovered Terraces 314,67 sqm

Exterior Parking 101,08 sqm

Swimming Pool 75,64 sqm

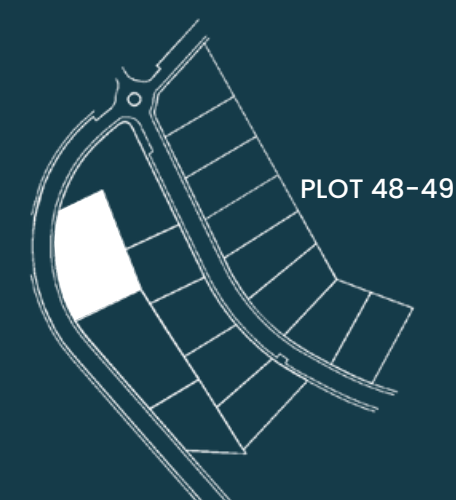
Total Exterior 518,39 sqm**Total Exterior & Interior* 1494,91 sqm**

Bedrooms 3

Bathrooms 3

Toilets 2

Exterior Parking 2 cars



*All the surfaces detailed in this floor plan correspond to built areas. The floor plan above is not final as it has been designed in accordance with the Building Execution Project and, consequently, THE VIEW CHASE DEVELOPMENT I S.L. reserves the right to include whatever changes due to technical and/or legal imperatives required by any public Administration or Agency. These changes, in any case, will be in accordance with the progress of the construction work. The accessory elements (for example, including the kitchen) are merely for illustrative purposes. The rotation sense of doors and the distribution of sanitary fittings are not binding. The surface areas shown are approximate and, may be altered for technical and/or legal reasons in the course of the construction work.



VILLA 11
GROUND FLOOR

Plot Surface 2010,60 sqm

Basement 465,24 sqm

Ground Floor 304,03 sqm

Upper Floor 172,37 sqm

Solarium 34,88 sqm

Total Interior 976,52 sqm

Covered Terraces 27,00 sqm

Uncovered Terraces 314,67 sqm

Exterior Parking 101,08 sqm

Swimming Pool 75,64 sqm

Total Exterior 518,39 sqm

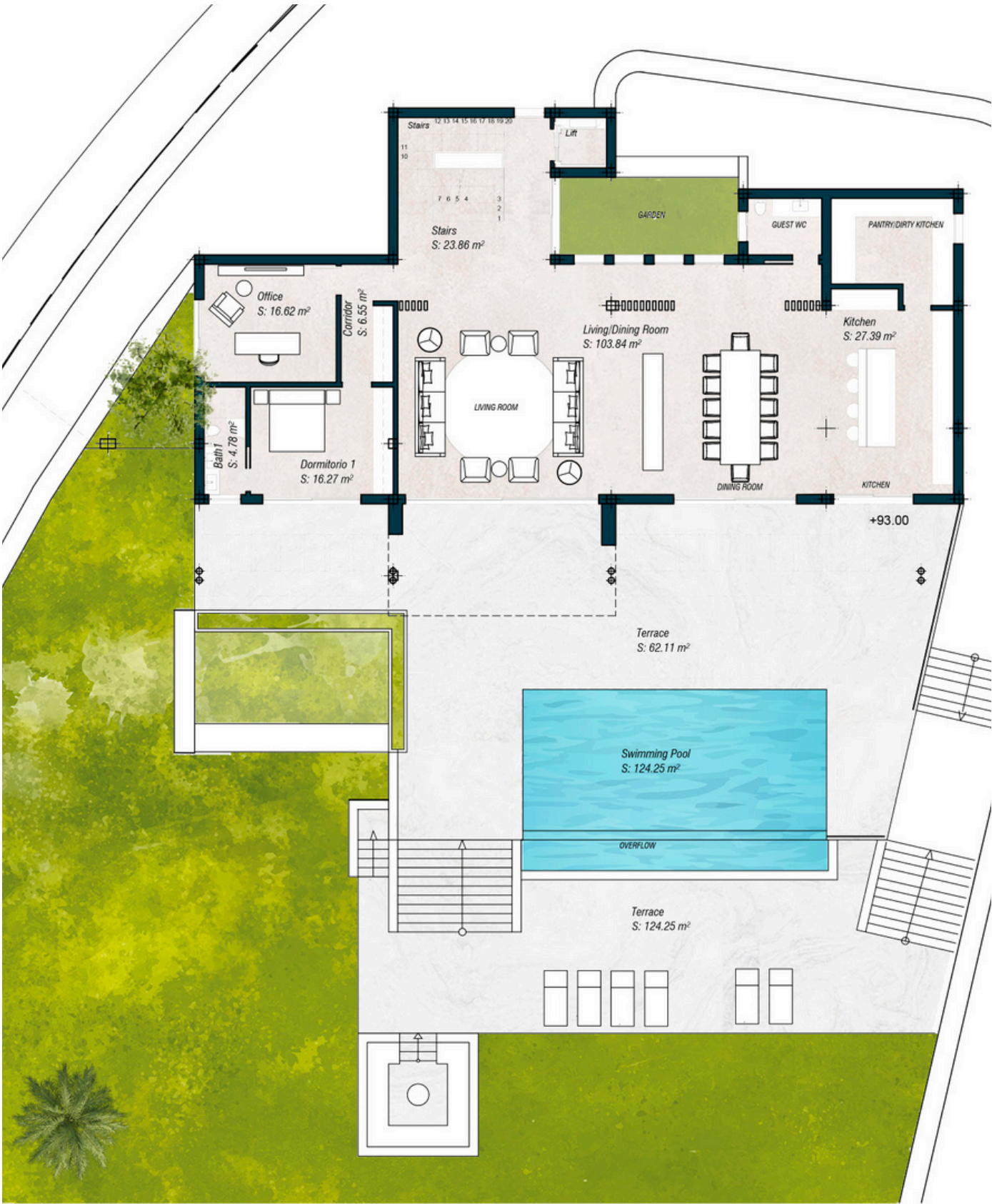
Total Exterior & Interior* 1494,91 sqm

Bedrooms 3

Bathrooms 3

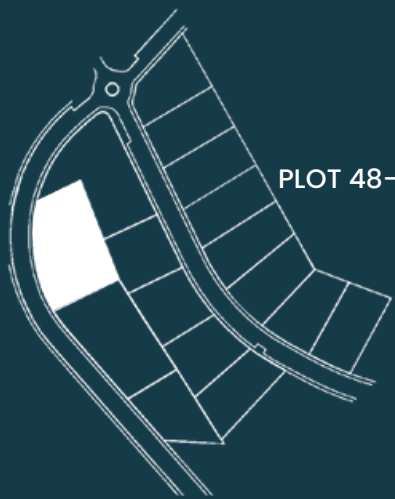
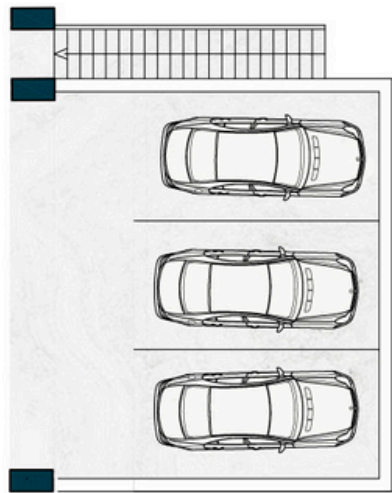
Toilets 2

Exterior Parking 2 cars

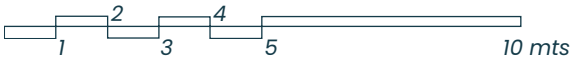


SERVICE APARTMENT

UPPER FLOOR-OPTIONAL EXTERIOR GARAGE



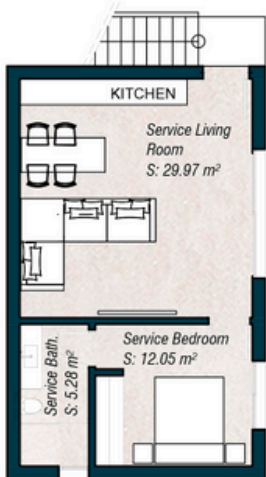
*All the surfaces detailed in this floor plan correspond to built areas. The floor plan above is not final as it has been designed in accordance with the Building Execution Project and, consequently, THE VIEW CHASE DEVELOPMENT I S.L. reserves the right to include whatever changes due to technical and/or legal imperatives required by any public Administration or Agency. These changes, in any case, will be in accordance with the progress of the construction work. The accessory elements (for example, including the kitchen) are merely for illustrative purposes. The rotation sense of doors and the distribution of sanitary fittings are not binding. The surface areas shown are approximate and, may be altered for technical and/or legal reasons in the course of the construction work.



VILLA 11
BASEMENT



LOW FLOOR-OPTIONAL SERVICE APARTMENT



Plot Surface 2010,60 sqm

Basement 465,24 sqm

Ground Floor 304,03 sqm

Upper Floor 172,37 sqm

Solarium 34,88 sqm

Total Interior 976,52 sqm

Covered Terraces 27,00 sqm

Uncovered Terraces 314,67 sqm

Exterior Parking 101,08 sqm

Swimming Pool 75,64 sqm

Total Exterior 518,39 sqm

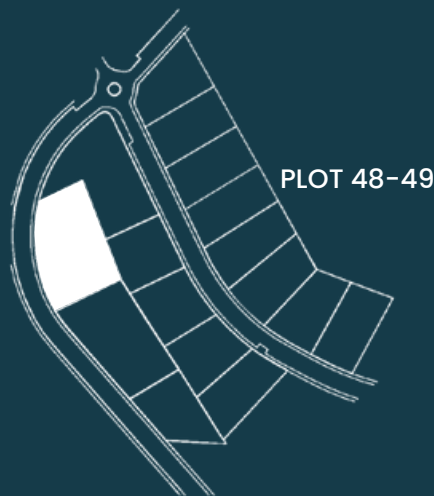
Total Exterior & Interior* 1494,91 sqm

Bedrooms 3

Bathrooms 3

Toilets 2

Exterior Parking 2 cars



*All the surfaces detailed in this floor plan correspond to built areas. The floor plan above is not final as it has been designed in accordance with the Building Execution Project and, consequently, THE VIEW CHASE DEVELOPMENT I S.L. reserves the right to include whatever changes due to technical and/or legal imperatives required by any public Administration or Agency. These changes, in any case, will be in accordance with the progress of the construction work. The accessory elements (for example, including the kitchen) are merely for illustrative purposes. The rotation sense of doors and the distribution of sanitary fittings are not binding. The surface areas shown are approximate and, may be altered for technical and/or legal reasons in the course of the construction work.



VILLA 11
SITE PLAN

Plot Surface 2010,60 sqm

Basement 465,24 sqm

Ground Floor 304,03 sqm

Upper Floor 172,37 sqm

Solarium 34,88 sqm

Total Interior 976,52 sqm

Covered Terraces 27,00 sqm

Uncovered Terraces 314,67 sqm

Exterior Parking 101,08 sqm

Swimming Pool 75,64 sqm

Total Exterior 518,39 sqm

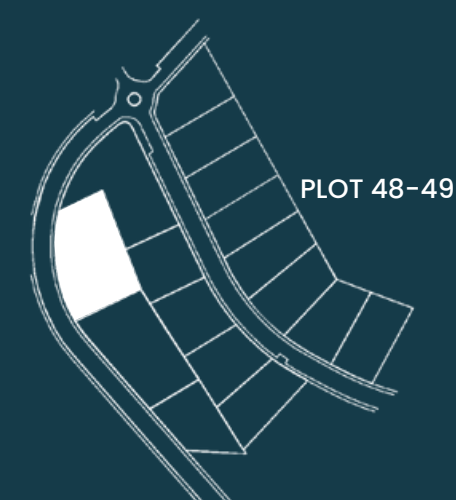
Total Exterior & Interior* 1494,91 sqm

Bedrooms 3

Bathrooms 3

Toilets 2

Exterior Parking 2 cars



*All the surfaces detailed in this floor plan correspond to built areas. The floor plan above is not final as it has been designed in accordance with the Building Execution Project and, consequently, THE VIEW CHASE DEVELOPMENT I S.L. reserves the right to include whatever changes due to technical and/or legal imperatives required by any public Administration or Agency. These changes, in any case, will be in accordance with the progress of the construction work. The accessory elements (for example, including the kitchen) are merely for illustrative purposes. The rotation sense of doors and the distribution of sanitary fittings are not binding. The surface areas shown are approximate and, may be altered for technical and/or legal reasons in the course of the construction work.



Where *Luxury* lives

Velázquez, 1, 29602 Marbella, España +34 951
122 313 | marbella@cire-costadelsol.com

Paseo de Reding, 25, 29016 Málaga, España
+34 951 122 312 | malaga@cire-costadelsol.com